

WANDI WARBLER

WANDI PROGRESS ASSOCIATION INC.

All correspondence to: The Secretary, 400, DeHaer Rd, Wandí, WA 6167.

EDITOR Ph: 93970249

June 2009

Wandi Progress Association Report

The WPA have been busy over the past three months, working on assisting residents with issues varying from the new subdivision to the council equine action group. We are also really pleased to see that the use of the terrific facilities at the Resource Centre has increased by the various groups that have seen and liked the unique "country feel" of Wandí. It is great to see activities such as Donkey clubs and seemingly hundreds of people on the oval from the Medieval society over the Foundation Day long weekend – everybody seemed to be really enjoying themselves which is fantastic.

Disappointingly we had mindless hoons again tearing up the oval a few weeks back, this is the third time that this has happened over the past couple of years.

We would like to remind everyone that the Wandí Community Planting Day is on Saturday 27th June 2009. Access to the area can be from either the Leslie Road or Frayne Place bridle paths as we will be continuing with the previous plantings done over the last couple of years. Previous attendees will be able to see how the natives have grown since last year. The date for the second planting day has been finalised. It will be held at the Wandí Community Centre on Monday 6th July, 2009. We will be starting around 9:00am and finishing around 12:00pm. We have 800 seedlings to be planted in the bare areas around the Wandí Resource Centre. A sausage sizzle has been organised for lunch to satisfy those hungry appetites. Everyone is welcome and it will be great to see you there. Many hands make light work.

We notice that there have been a number of new subdivisions and welcome all new residents to our vibrant Wandí community!

Enjoy your bumper edition of the warbler, we also appreciate your feedback or any ideas for articles, please contact us at WandiProgress@gmail.com

Date to Remember, 27th June - Community Planting Day at Magenup Lake

WPA COMMITTEE & MEETING DATES 09

Dates for 2009 – 17June/15 July/19 Aug/16 Sep/21 Oct/18 Nov/ 16 Dec

President: Peter Hegarty

Vice Presidents: Fred Erdtsieck, Les Whiddett

Treasurer: Sandra Knight

Minute Secretary: Ken Workman

Committee members: Janet Carr, Debbie Cocks, Shane Addis, John Lydon, Rod Cocks, Jim Russell, Rod Pattinson

The committee meets every third Wednesday of the month at 7.30pm. All residents are most welcome to attend or if you have some concerns in the Wandí area and would like the Progress Association to assist, please contact any member.

New committee members are always welcome and we would love YOU to become part of our community, contact Ken Workman on 9397 1060 or email woodboroughwa@bigpond.com for further details.

The Wandí Warbler is now available via email, please help the environment by joining our electronic mail list. Contact WandiProgress@gmail.com to be added to our database.



Wandi Community News

“On The Nose” – Are councils from outside our area going to dump their rubbish in Our Backyard? - Proposal to Build a “Composting Facility” Close to the BioWise Site on McLaughlan Road (Between Anketell and Thomas Roads).

This proposed facility is for the members of the Rivers Regional Council (Armadale, Gosnells, Mandurah, Murray, Serpentine-Jarrahdale, South Perth & Waroona) to dump the waste from their green bins. The intent is that this waste will be “composted” on site. Although the design is yet to be decided it may be a similar composting system to that used by the South Metropolitan Regional Council (Cockburn, East Fremantle, Fremantle, Kwinana, Melville, Rockingham and Canning (who are withdrawing from this group in 2010) which is located in Canning Vale/Leeming. There have been and still are complaints by residents there of odour from this site and it is subject to a Parliamentary Inquiry. See <http://www.cmcoag.com> for more information on these issues.

It is alleged that up to 80 trucks a day will be delivering 100,000 tonnes of waste to this new site. NOTE: The Town of Kwinana will not be using this facility. The land is owned by the Water Authority and therefore Town of Kwinana will not be required to give their approval for this site.

Issues for residents to consider include: potential odour problems, potential for leaching of wastes into underground water, damage to The Spectacles and an increase in trucks using Anketell/Thomas Roads and Kwinana Freeway.

Mr Alex Sheridan CEO of the Rivers Regional Council has been contacted and commented:

- Some 39 sites south of the river were originally considered
- Two are now under consideration, the McLaughlan Road site is preferred followed by the Miller Road site in Baldivis. These sites are preferred following a list of selection criteria of which zoning was one.
- The buffer zone required is 200 – 250 Metres
- The technology to be utilised will be either aerobic or anaerobic digestion but not incineration, gasification etc. It will incorporate a fully enclosed building which has negative pressure, however the engineering to be utilised has not yet been decided.
- The environmental approvals document for the McLaughlan Road site is being prepared which includes community consultation.
- There will be a robust feasibility study.
- Project proposals will be advertised and presentations/open days made at various locations in Kwinana.
- Whilst odours are likely to be limited there can be no guarantees that there will not be any of them.

Members of the Kwinana Progress Association are involved in forming an action group so expect to see further publicity about this soon. Spokesman Steve Hesse comments “I support the composting technology as long as it is the correct engineering solution, however the proposed location at McLaughlan Road is “madness” in that it is only 700 metres from homes in Winsor Hills (a suburb of Orelia). In addition it is located adjacent to the Spectacles with all the potential ramifications that may bring”.

For more information see the Rivers Regional Council website <http://www.rrc.wa.gov.au/resource-recovery-facility.htm>

Wandi Development – Satterly Group Starts Advertising “Honeywell Estate”

In their website the Satterly Group states; Until now, the vast majority of new metropolitan estates have replicated the conventional approaches to urban living.

Honeywood will be different in five key respects.

1. Although it's conveniently located adjacent to the Kwinana Freeway and Southern Rail Line, it will offer a decidedly relaxed feel with preserved wetland and parklands connected by a network of walking and cycling trails.
2. The conserved areas of native wetland and native bushland will occupy around a quarter of the land at the estate and remain home to a sustainable community of birds and other wildlife.

3. An imaginative mix of housing options will be encouraged and created. In addition to the traditional cottage and family homes there will be a selection of larger, semi-rural homesites (which will buffer Honeywood from the outside world and enable very substantial homesteads to be built) and even some higher-density development is allowed for closer to the planned local train station and village centre.
4. While you'll be able to enjoy a peaceful life in harmony with nature, you'll only be around twenty minutes from Perth's Central Business District or Fremantle. The vibrant and substantial retail precincts of Cockburn Central and Cockburn Gateway Shopping City, together with employment opportunities in the Town of Kwinana, are only a short drive from Honeywood's peaceful heart.
5. The innovative Satterley Property Group estate will incorporate many of the Waterwise and energy-efficiency initiatives which have made other communities such as The Green (in Brighton) and Evermore Heights (in Baldivis), multi-award-winning.

Find further information at <http://www.satterley.com.au/go/residential-estates/honeywood>

Subdivision Submissions – Wandi residents are being kept in the dark! Is the Developer commencing work this winter?

In the last issue we highlighted that residents of Lyon Road had received letters from council calling for submissions regarding the sub division but the wider community had not. The Progress Association sent a letter detailing our concerns and stating that in our opinion the submission date should perhaps be extended. The result was that we received a “typical” standard letter which did not answer our concerns. Also we understand that there were numerous submissions sent to council from Wandi residents. To date we are not aware of anyone receiving any responses other than a standard acknowledgement. If you have received a detailed response it would be appreciated if you could please contact Chris Barnes on 94100747.

Interestingly it was through the article in the February edition of the Warbler that a resident of Lyon Road was made aware of the letters from council regarding the sub division. She then rang council and was advised that only residents that will be affected by the sub division were informed. She questioned this as her property inherits the school and wondered why council felt that this did not concern or affect her. Makes one think???? Talking of the school why on earth would the subdivision design put it in between two main roads?

We understand that the subdivision is expected to be on the agenda for the 10th June Kwinana council meeting and thus concerned residents may wish to attend this meeting. (Note it may be worth phoning the council to make sure that this is the case).

Our understanding is that the developer was due to start work this winter so it will be interesting to see if the process has stalled the development as well.

Thanks to Chris Barnes for this article, for further information she can be contacted on 94100747.

Would you like Kwinana Courier at Gateways Shopping Centre?

WPA has been in touch with the Kwinana Courier requesting that they put a stand of newspapers up at the Cockburn Gateway shopping centre for residents that rarely venture down into Kwinana.

It appears that they would do this however it requires the centre management to okay it and your action to support it. If enough Wandi residents contact the shopping centre management on 9498 5577 requesting they have a stand for the Kwinana Courier the weight of numbers might just succeed, no harm in trying.

Hoons Damage Wandi Oval

Recently hoons twice removed the wooden bollards and cut up the oval rather badly with their vehicles. If you live in the area and hear strange behaviour or cars on the oval please contact the police on 131 444 to report dangerous, reckless or anti-social driving (hoon) behaviour. All calls are treated confidentially.

Damage to Tennis Court Surface

There has been some minor damage to the tennis court surface by vandals illegally gaining access by climbing the fence and skateboarding on it. Please report any events such as this to Kwinana Rangers. Please call **0411 078 264**. They can be contacted 7:00am - 6:00pm Monday to Friday and 8:00am - 5:00pm on weekends.

Around the Resource Centre

BBQs

Don't forget that there are now a couple of free BBQ's, one near the tennis court and another on the "Wandi Resource Centre (Old Hope Valley School)" side. With the close access to the playground etc it is a great place to have those larger family gatherings. We ask that all you leave is your "footprints" along with a clean BBQ for the next user.

Tennis Courts

To book the tennis courts please phone Debbie (9410 2009) or Ken (93971060) between 9:00am and 5:00pm. The cost is \$5 per hour. Yearly memberships are available at \$125 as well. A \$20 key bond is required on both hourly and annual memberships.

Neighbourhood Day

Earlier this year a group of Wandi Heights residents met at a coffee morning. We agreed that we would meet informally every six weeks or so. At our second meeting Bob and Lois White, long time residents of Mandogalup, gave a very interesting talk about their lives in this area in the old days. They brought along some scrap books too which we enjoyed looking through.

We also held an afternoon tea at Wandi Hall. It was fortunate that this coincided with Neighbourhood Day and we were successful in obtaining a small grant from the Town of Kwinana to assist with our expenses. Unfortunately, only a small group of residents attended, however, perhaps next year more people will come along.

On the very last day before the winter rain started some Wandi Heights (Anketell) residents enjoyed a guided walk around Lake Magenup to look at the work undertaken by the Wandi Landcare Group over the last few years. Fred Erdtsieck, our very informative guide, pointed out the various areas of tree-planting undertaken by the community since 2002. In addition he identified local native trees and weeds. The new signs around the nature trail are very informative and our group is keen to re-visit the area once there is water in the lake.

Participants enjoyed morning tea in the new undercover area whilst Fred provided more information about Wandi Landcare Group. Three families have expressed an interest in joining the group and taking part in the community tree planting day.

Thanks, Fred, for giving up your time to assist with this activity.

For more information on this group please contact Janet Carr on 94111788



The Wandi Walk Group

Rare Chuditch Found in Wandii – The first spotted in Perth for 20 years!

Back in April a rare carnivorous marsupial, the Chuditch, a white spotted marsupial about the size of a cat, which once roamed across 70 percent of Australia, was found by a resident in Wandii. This was the first spotted in Perth for 20 years.

Decades of habitat loss and predation from feral cats, dingoes and foxes have confined the threatened species to Jarrah forests and woodlands in WA's South-West.

“To officially record a Chuditch in Wandii is very significant, as it has been almost 20 years since this species has been recorded in the metropolitan area this close to Perth,” according to the Department of Environment and Conservation’s wildlife protection officer Rick Dawson.



Unfortunately the Chuditch was caught in a rabbit trap and as a result of injuries had to be euthanised.

To report Chuditch sightings, call DEC's Species and Communities Branch on 9334 0455

Wandii Landcare / Progress Association Website

The Wandii Landcare Group and the Progress Association now have their respective web domains. They are www.wandilandcare.org and www.wandiprogess.org . There is still much work to be done but the sites will develop over time. You can also download the latest edition of the "Wandii Warbler" in full colour here.

Greenskills Native Tree Decline Workshop – Serpentine Jarrahdale - 20th June

Native tree decline is becoming alarmingly widespread across south-western Australia due to a range of factors including insect attack, disease, water stress and loss of understorey vegetation. A common symptom is canopy decline, where the upper branches die off, leaving trees looking bare and twiggy. Consequences of native tree decline and subsequent death of native trees include loss of habitat for native birds and animals; and loss of aesthetic values.

The Serpentine Jarrahdale Landcare Centre and Green Skills staff are helping local landholders prevent and manage tree decline on their properties by hosting free native tree field days, and providing workshop attendees with free tree treatment kits, native seedlings and weed control chemical.

Green Skills project manager Michelle Yeomans said the workshops cover all aspects of native tree decline, including how to recognise the early signs of decline, to prevent tree decline, and treat sick trees. “We hope to give landholders the knowledge and skills to feel confident in treating trees on their properties in order to prevent and reverse tree decline. There are a wide range of treatment options, including phosphite injections, nutrient implants, composting, and revegetation of understorey plants”

Workshop attendees will be invited to participate in a trial, testing the effectiveness of a variety of treatment options. Participants will receive a free tree treatment kit, worth over \$100. Attendees will also be eligible to receive up to \$200 worth of native seedlings and herbicide for controlling weeds on their properties.

The workshop will be held in Bedforddale on Saturday 20th June, 9am to midday. To register or for more information about tree decline, phone or email Michelle Yeomans on 9360 6667 or myeomans@greenskills.org.au.

Wandii Landcare Group.

Well we are not too far off winter and the planting season will be off and running. With the dry spell that we have had, planting out of native tube stock away from a drip line has been out of the question. I hope that we can now call the dry spell over so planting out can soon start. I have a thriving and diverse selection of native plants, many of which are outgrowing their pots and really need to be put in the ground and normally would already be planted. These were collected off my fire break up till the last day before fire break inspections and these will be used as infill for lightly degraded spots on my block. I'll keep you posted as I perfect the technique.

Greenskills Addendum - Greenskills ran their Native Tree Decline workshop at the Wandi Community Hall on Saturday 9th May and it was a great success with 30 people attending. I won't go into detail as it has been covered in another article but I would like to add to it in regards to those that attended that have predominantly Banksia woodland with few if any Eucalypts on their property. Michelle Yeomans has kindly accepted to help me make a film detailing the drilling and injecting of Banksia trees and this will be made available to all WLCG members for a small fee to cover costs. I would like to add eucalypts, Xmas trees and paperbarks as well in a later edition so that all the trees are covered. This will be a valuable resource for anyone wishing to help abate the decline of native tree health on their property. Please contact me for more details.

Volunteer Expo - The WLCG assisted the Town of Kwinana at the Volunteer Expo which was recently held at the Requatic Centre in Kwinana. The idea behind the exposition was to showcase many of the volunteer activities available in the Kwinana Shire to year 10 students to give them an idea of where they could spend their community hours. The booth was tenanted by Angela Jacob our bushcare officer, Craig Wilson Coastcare officer and myself. It was a great opportunity to meet other volunteer groups in the field and I made several new contacts. Unfortunately, the government has changed its policy on compulsory community service for year 10 students so it is unclear what the future holds in that department.

Herbicide Course - The last Herbicide course was run at the Wandi Resource Centre on the 6th June 2009. The course had a full compliment and marks the end of funds kindly donated to the WLCG by International Power Mitsui. I will be looking to applying for further funding after the completion of this course and would appreciate it greatly if you could contact me with expressions of interest if you would like to participate. The courses are free of charge to financial WLCG members and a rundown of last year's ones can be found on our web site. Empower yourself with skills and knowledge!!

Wandi Nature Reserve in focus - A joint venture has been formed between the WLCG and Urban Nature (UN), a branch of DEC, to attack veld grass and pigface in the Wandi Nature Reserve. Weed mapping was done over four days by a team of up to 5 members from UN bushforever and myself over the whole 30.59 hectares of reserve. We found the bush land to be in excellent condition and teams from rare flora specialists to contract sprayers will be deployed over different times through this year and next. The WLCG has offered volunteer services to remove the pigface infestations. A wildflower walk and pigface removal day has been envisioned for a day in early Spring to showcase this wonderful example of a Banksia woodland in the metropolitan area. I will let you know more closer to the day. An article was published in the local newspaper and one is up and coming in the Winter issue of "Bushland news".



Bush Forever Crew Map Weed Density in Wandi Nature Reserve

A grant of \$10,000.00 has been applied for and I will keep you posted on the progress. The Wandi Nature Reserve is a bushforever site managed by DEC and part of the Jandakot Regional Park.

Cockburn Wetland Education Center outing -

An outing was organised by the WLCG and the Friends of the Spectacles to the Cockburn Wetland Education centre (CWEC) in Bibra Lake on Tuesday 27th May. Our host for the afternoon was Denise Crosbie the Wetlands Officer and she showed the group over the wetlands complex which included their extensive tool shed, their nursery and finally the wetland area where rehabilitation work is ongoing. The CWEC collects seed from the surrounds of Bibra Lake, prepares this seed and finally propagates it in their nursery. These seedlings are exclusively used for the Bibra Lake. This is ideal as the local genetic pool diversity is maintained unlike in standard rehabilitation work where native tube stock comes from seed that may have been collected many kilometers away. Denise discussed various ways of weed control, the pitfalls and successes.



Walking over the Bibra Lake wetland area

Everyone thoroughly enjoyed the visit and left with a better understanding of how they may better maintain their properties. Even those with dry blocks learned things that could help them out as rehabilitation at the CWEC is done at different levels around the centre. For those that missed out on the tour and would like to have another chance, contact me with your details and if I get enough people I'll ask Denise if she can do it again when she is not so busy. I am also preparing for a trip to the Men of the Trees nursery in Rockingham and will keep those on my email list and financial members updated.

Fred Erdsieck – Coordinator Wandil Landcare Group T: 9397 2232 M: 0428 604 032E: wandilandcare@gmail.com
W: www.wandilandcare.org

Another Wandil Invader – A real issue for some residents - Portuguese millipedes (Ommatoiulus moreletii)

Reproduced thanks to Department of Agriculture and Marc Widmer, Technical Officer, South Perth

Portuguese millipedes (*Ommatoiulus moreletii*) belong to a group of animals called Myriapoda (meaning many legged), which also includes several native Australian millipedes and centipedes. Millipedes normally live outdoors where they feed on leaf litter, damp and decaying wood, fungus and vegetable matter like tender roots, mosses or green leaves on the ground. Their slow crawling, rounded bodies have two pairs of legs on each body segment and rows of glands that secrete a pungent yellowish secretion when the millipede is agitated. This secretion is composed of organic chemicals called quinones, which make the millipedes distasteful to predators such as birds. There are well over 1,000 species of millipedes worldwide, and for many of these only a few experts can tell them apart.

Distribution

The Portuguese millipede naturally occurs in southwest Europe. They were first recorded in Western Australia around Roleystone in 1986 and (since the late nineties) have been found in other areas in the southwest of Western Australia. They are also found in South Australia, ACT, Tasmania and Victoria.

Description

The smooth, cylindrical body of the Portuguese millipede distinguishes it from the native species around Perth, which have a bumpy look. Native millipedes are usually found in low numbers and are widespread. Portuguese millipedes congregate in large numbers and are quite mobile, especially after the first rains in autumn. Portuguese millipedes will curl up into a tight spiral when disturbed, or try to escape with thrashing, snake-like movements. They are 20 - 45 mm long with 50 body segments when fully developed. The adults range in colour from slate-grey to black. The juveniles are light grey/brown, often with a darker stripe along each side.

Life cycle

Portuguese millipedes reproduce in autumn and early winter. They would probably begin mating in March or April and lay most of their eggs in April and May. This would explain why they appear so mobile and so abundant after the first rains. Mature females lay about 200 pinhead sized, yellowish white eggs in a small hole they have made in the soil. An immobile, legless stage hatches from each egg and develops into the first active stage of the life cycle after about one week. This first stage has only three pairs of legs, but each time the animal moults until it is mature, more legs and body segments are added. Millipedes grow or develop through a series of moults. During moulting millipedes are very fragile because the new cuticle is soft and easily damaged when first formed.

The millipede usually eats the old cuticle. After the first year of life, juveniles have reached the seventh, eighth or ninth stage of development and will be about 1.5 cm long. After this stage they will moult only in spring and summer. Portuguese millipedes usually mature after two years when they are in the tenth or eleventh stage of growth and some can live for more than two years.

Millipedes as pests

Although millipedes play a useful role in breaking down organic matter in the soil, Portuguese millipedes are pests when they reach high population levels. Portuguese millipedes are not harmful to animals or humans, but they can be a significant domestic nuisance when they invade homes and gardens in their thousands each autumn and spring. They are one of the few millipede species that are attracted to lights at night, and this is presumably why they invade homes. They do not breed inside houses, and once inside a house will probably die. Millipedes can occasionally damage horticultural crops such as melons, strawberries, tomatoes and potatoes, yet in small numbers they do no harm. No damage to broadacre crops has been reported.

Management

Portuguese millipedes are attracted to lights. Turn off external lights which are close to buildings and minimise the escape of light from buildings through use of curtains, blinds and weather-strips on doors. Effective door seals will prevent the entry of these unwanted pests.

Clean up the area

Millipedes in the house and garden will probably have resulted from eggs laid within 100 metres from the house, and while compost is good for gardens, it also allows higher populations of millipedes to develop. Reducing the area

covered by organic matter such as compost, leaf litter and mulch, will help reduce millipede populations by diminishing food and areas of shelter.

Biological control

Some spiders, beetles and scorpions will eat millipedes, but these predators do not significantly reduce millipede numbers. They are also parasitized by a nematode and a European fly. Work was under way to establish this fly in South Australia, but the flies were released and never seen again. In 1988 the parasitic nematode, *Rhabditis necromena*, was released by the Department of Agriculture South Australia in more than 2000 locations in that State. The pest status of the Portuguese millipede has decreased in many areas in South Australia since that time. *Rhabditis* has been found in millipede populations from the Perth area, and this seems to have provided relief in some areas but we can't bank on this for total control. These nematodes attack only millipedes and are active during late autumn and winter. Nematodes may take several years after introduction to reduce millipede numbers, especially in areas adjoining bushland which can support enormous populations of the pest.

Physical barriers

- Smooth barriers can stop millipedes from entering houses because they cannot cross smooth, vertical or rounded surfaces (Figure 4) These can be fixed to walls, below doorsteps, window ledges and vent bricks - keep them clean and free of bridging vegetation. These barriers must be continuous with no breaks (unless placed under doorways), to allow millipedes to bypass.
- Plate glass, 7.5 cm wide and 4.5 mm thick, can be set around the base of the house. This prevents millipedes from entering because they cannot gain a foothold on the smooth surface.

A variation of the barrier for vertical surfaces is to include two adhesive aluminium tapes along the barrier, charged with a small electric current drawn from something like a 9 V battery. Connect the positive pole of the battery to one tape and the negative pole to the other. Space the tapes 10 mm apart at all points to avoid short circuits. Millipedes are stunned or killed when they touch both tapes. **WARNING:** Do not connect these tapes to a mains electricity supply.

- A moat and trap system can also be installed around dwellings. 100 mm C-Purlin with return lip, buried flush with the surface of the ground may be used for this. Millipedes fall into the moat (wet or dry), and cannot escape the overhanging sides. The ends of the channel may also be modified to include a trap, but this is not necessary as the millipedes will die in the moat if it is clean and free of debris for them to feed on or dwell in.
- A less permanent barrier is formed using a wide smooth vinyl, polypropylene or polythene tape (48 mm at least). Teflon-coated tape can also be purchased. Fix the tape to the wall with contact adhesive.
- Light-traps have offered good control. One can be constructed using stormwater pipe or even a box with holes at ground level, using low voltage garden lights or a weather-proof fluorescent light to attract the millipedes at night. This should be placed along the outside wall near where the millipedes are entering and the floor of the trap treated with an insecticide such as carbaryl. Alternatively, a light trap can be set up away from the house. The trap-box should be buried flush with the surface of the ground and it must have smooth sides so the millipedes will fall in and not escape. A weather-proof light assembled above this will lure the millipedes to the trap at night.

Chemical control

Chemical barriers at least one metre wide present millipedes with a treated surface wide enough to kill them before they enter a house. These pesticides have a limited active life and must be re-applied for ongoing control - especially during periods of rain. Chemicals can be applied to outside walls, paths and garden beds or other areas where millipedes are thought to breed. The following chemicals are currently registered for use against millipedes;

- Bendiocarb (Ficam®)
- Carbaryl (Carbaryl®) Agchem Carbaryl 800 WP Insecticide®, Agchem Carbaryl Insecticide Spray® or Agchem Carbaryl SC Liquid Insecticide®.
- Cyfluthrin (Baythroid®)
- Propoxur applied to doorsteps and window ledges, for example, Baygon Household Insecticide Surface Spray®.
- Pyrethroids have little residual effect and should be sprayed directly onto the millipedes. Many brands of domestic insect sprays contain Pyrethroids.

Disclaimer: Chemicals must be used in accordance with instructions on the label. Mention of trade names does not imply endorsement or preference of any company's product by the Department of Agriculture, and any omission of a trade name is unintentional. Recommendations were current at the time of preparation of this publication.

The full publication including figures and photos can be found at http://www.agric.wa.gov.au/content/PW/INS/GN2003_002.PDF

Also a neat catcher can be found at <http://www.millipedecatchers.com>

Wandi Playgroup Vacancies

There are a number of vacancies at the Wandu Playgroup. If you would like to meet with a delightful group of mums and let your children have the opportunity to play with a super range of toys / mix with others the group would be pleased to see you. The Playgroup meets at Wandu Hall on a Tuesday at 9:30am. A small fee applies. Contact - Jenny (President) - 94379484 or Melissa - 93972841

Kwinana Council in the Mix! – Merger Options – Have your input

Staff from the Town of Kwinana will be attending a wide variety of venues in the upcoming weeks to ask the community their views on proposed council amalgamations.

As part of the Local Government Reforms announced by the Minister, Hon John Castrilli MLA, councils need to inform the Department of Local Government and Regional Development of their preferred amalgamation options by the end of August. "Council has identified 6 key amalgamation options and want to ask people which one they prefer," Kwinana Mayor Carol Adams said,

Those options are:

1. Town of Kwinana retains current boundaries and autonomy by remaining the same;
2. Town of Kwinana has a boundary realignment, moving the northern boundary north to incorporate all of the industrial strip along Cockburn Sound thus increasing the size of Kwinana;
3. Kwinana amalgamates to the south with the City of Rockingham;
4. Kwinana amalgamates to the east with the Serpentine Jarrahdale Shire;
5. Kwinana amalgamates to the north with the City of Cockburn.
6. Kwinana amalgamates with all local government authorities to form a south-west regional council. This would include the following LGA: City of Fremantle, Town of East Fremantle, City of Melville, City of Cockburn, City of Rockingham

"At this time, the Town of Kwinana has not made a decision on a preferred option" Mayor Adams continued, "The feedback from the community will be collected and used to guide Council in its decision making process."

Town staff will attend community activities at venues such as the Kwinana Recquatic, the Kwinana Library, the Hub Shopping Centre and Koorliny Arts Centre as well as key meetings with community groups. Community members attending any of these venues or meetings are encouraged to provide their feedback to the Town of Kwinana staff.

A public meeting to discuss the amalgamation options will also be held on Tuesday 9 June 2009 from 7pm at the Kwinana Recquatic Multipurpose Room. All community members are invited to attend.

Should the community wish to discuss any issues relating to the Local Government Reforms they are invited to contact:

Grant Shipp

Strategic Projects Coordinator

Town of Kwinana

Tel: 9439 0206

Email: grant.shipp@kwinana.wa.gov.au

Control of the Dreaded Bindii Bindii or JoJo

July is time to control that prickly pest bindii weed (*Soliva pterosperma*) which infests your lawn every year. This winter-growing annual, originally from South America, produces a seed capsule protected by spines, which, as many householders will know, make it impossible to walk on a badly infested, prickly lawn in bare feet – ouch!

The most effective control method for jo-jo weed is to blanket-spray all the affected lawn with selective herbicides.

The most effective herbicides for killing jo-jo contain bromoxynil plus MCPA. Herbicide products are sold in small packs under various trade names, and are available from hardware stores and plant nurseries. These products will also kill many other broadleaved weeds including flatweed (cats ear), dandelion, capeweed, cudweed, and plantain.

Thanks to the Dept of Agriculture, for full details see http://www.agric.wa.gov.au/content/PW/weed/gn2004_004.pdf

Sydney Wattle

Keep up the good work, many residents have been killing off this weed, however now with the first rains the seeds will be germinating, already there are many seedlings so pull them out – it is easy when they are small!

Do you have any useful community news such as crime in the area etc? Contact the Editor on 93970249 or email jimrussell@iceweb.com.au

Happenings at the Hall and Resource Centre

Smithy's Boxing Gym - Boxing Training

Mon – Thurs 5:30 to 7:15pm

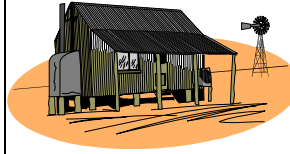


\$7 per night

Phone Elaine on 94391078 or
Mob 0412404674
Email: elliejo@westnet.com.au

WANDI HALL HIRE

Phone Debbie Cocks on 9410 2009
for further information
or bookings



WANDI CRAFT GROUP



1st & 3rd Thursday
of the month

*A friendly group that meet for a chat and
participate in a variety of crafts.* Contact Debbie on
9410 2009

OLD TIME FAMILY DANCE



2ND Saturday
of each month

7.30pm start

Live Band - Supper supplied - No alcohol
Contact Pat – 9439 2727

WOODTURNING CLUB



All meetings held in
the Green Workshop
First & third Thursday of
the month at 7.00pm

Wednesday
Men - 8.00am to 12.00
Women - 12.00 to 3.00pm

New members always welcome.
For further information phone Alan 9528 2520

TENNIS COURT HIRE

Have a fun day with the family or friends by hiring our tennis courts Or become a member with an annual fee. Healthy family fun!!



Cost is \$5.00 per hour
per court with a \$20 key
bond.

For more information or bookings phone Debbie Cocks –
9410 2009 or Ken Workman - 93971060 between 9:00am
and 5:00pm

WANDI PLAYGROUP



Tuesdays at the
Wandi Hall
9:30 am

A delightful group of mums and children meet every Tuesday
Contact - Jenny (President) - 94379484
Melissa - 93972841
Natalie – 94987210
for further information

WANDI BOOKCLUB



2nd
Wednesday of
the month

Wandi Hall Club rooms 7.30 pm
Contact: Marie Tully 9410 0245.

SAVE EQUUS



Meet the
Magenup
Equestrian
Centre

1st Monday of each month, at 7.30pm. All horse
lovers are welcome

WA SCROLLERS

Members of the Australian ScrollSaw Network Inc.
Meet every Tuesday morning 9.00am – 12.00
Where: Clubrooms, Wandi Hall
Beginners welcome
Contact: Kevin Treasure – 9529 3227



WEST AUSTRALIAN GUILD OF WOODCARVERS INC. WANDI

This branch of the Guild meets in the green shed every
Monday morning between
9.00am &
12.00. - Beginners or advanced welcome.
Contact- Fred Brewer 9419 3558

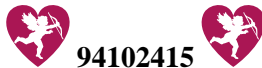
SOUTHERN DISTRICTS TRITON CLUB

Meet every fourth Thursday of the month at 7.30pm
in the Wandi Hall Clubrooms.

Contact - Gary Withers Ph 9593 2317

LOCAL ADVERTISEMENTS

Jane Silich CIVIL MARRIAGE CELEBRANT



94102415

Mob 0401425404

info@janesweddings.com.au

www.janesweddings.com.au

Wandi Small Harvest

Unprocessed Bush Flower Honey

Bee Removal Services

Bush Maintenance Service

Selective Weed Spraying

Fred Erdsieck Mobile: 0428604032

Tel: 93972232

Email: fred@wandismallharvest.com

Wandi Hair Studio

Hair, Nails and Makeup



Phone Karen

9410 2666 or 0417 928 699

by appointment only

116 The Horseshoe, Wandi

25 years of hairdressing experience



Local Rep. Barry Wyllie

Sales – Service – Parts

Re – conditioned units

Phone – 9410 1848

Peter Woodward's Lawncare Services

Commercial & Industrial Specialist



Fax: 9437 2999

Mobile: 0414 729 346

ABBA Earthmoving

- ✓ Earth moving
- ✓ Bobcat Hire
- ✓ Driveways
- ✓ Site Clearing
- ✓ Back Hoe
- ✓ Sand Supplies
- ✓ Sand Pads
- ✓ Compaction



Call Graham Hardy

Tel: 94371615 Mob: 0418 955 264

Riding Lessons
Wandering Grove Equestrian Park
 Level 1 NCAS Instructor
 Olympic Sized Dressage Arena
 Fully Grassed Jumping Arena
 All Levels above beginners catered for
 Children and Adult Lessons
 Private Lessons \$60 per hour
 Group Lessons (2-4 students) \$40 per hour
 Phone- Susan Poole 0409378895 or 93971082
 260 DeHaer Road, Wandl
<http://www.cavalletti.com.au/susanpoole/>

Glenda Gittings

HAIRSTYLIST



040 555 3776
 10 The Horseshoe, Wandl
 Private Studio with Kid's Corner



 **imagebox**
 photography

weddings - portraits - events
 & commercial

annette nash

m: 0432 722 362
 e: a_nash3@bigpond.com
 w: www.imageboxphoto.com.au

FLETCHERS
PROPERTY MAINTENANCE

Residential – Industrial – Agricultural
 Lawn mowing, whipper snipping, gutter cleaning
 and all gardening works

Lawn mowing
 Whipper Snipping
 Gutter Cleaning
 Exterior Painting
 Window Cleaning
 Roof Plumbing
 Gardening Works



Call Neil – 0431 048594 or 93970572
 Email: fletcherneil@msn.com

 **PRESTIGE**
PATIOS

gables - domes - flats - pyramids - carports

Ron Nash

e: prestigepatios@gmail.com
 m: 0423 815 572
 a: 358 Rowley Road, Wandl WA 6167

Industrial Sewing

Repairs to Horse rugs and associated gear
 stitching requirements

Canvas work including designing of boat and
 trailer protection covers

Customised sewing and design to meet your
 needs with quick turnaround and pick up service
 for those urgent jobs

Please ring Wendy to discuss on Ph 0402402451

Rivergum Chalets - Margaret River



**A tranquil forest
 retreat in the
 heart of Margaret
 River for that
 special relaxing
 break**

Contact Vicki or Matt on Ph 08 97 57 2101
 Email: info@riverglenchalets.com.au

Visit our Website for more details and on line
 bookings

<http://www.riverglenchalets.com.au>

Like to advertise here?
 Contact the Editor on 93970249 or email
jimrussell@iceweb.com.au

*These adverts really work – Neil Fletcher of Fletchers
 Property Maintenance says “It is coming up to a year
 since I started the business, and although the current
 global market is poor my experience here in Wandl has
 been the opposite”. He would like to thank the local
 Wandl residents who have supported his business.*