

WANDI WARBLER

WANDI PROGRESS ASSOCIATION INC.

All correspondence to: The Secretary, 400, DeHaer Rd, Wandí, WA 6167.

EDITOR Ph: 93970249

March 2010

Wandi Progress Association President's Report

Firstly, I would like to thank the outgoing 2009 Wandí Progress Association committee for another great year. While it was a quiet one from the perspective of new projects, it was a record year in terms of use of the facilities, and the need for further development is becoming increasingly clear. Rod Cocks has worked tirelessly on the conceptual and planning aspects of such a development and the parameters and likely costs are firming up. In addition the committee has sought out various options for funding of such a project, and I am sure there will be more happening on this in the coming months.

The Wandí Progress Association AGM on February 17th was a significant event with the attendance of more than 50 residents. There was much interest around the presentation by Grant Singleton from Satterley regarding the new work which is finally starting in the western Wandí areas. We were told about the latest proposal for parks, shops and schools as well as the residential developments between Lyon Road and the freeway. There was more than a little frustration evident and many residents felt that the concerns they had raised with both the developers and the Council had been largely ignored. Grant did his best to assure residents that they were still keen to work with the WPA and residents as the development progresses to ensure the best outcome for all.

One of the big positives to come out of the AGM was a unanimous vote to change the constitution to include a provision for life membership and the bestowing of the inaugural life membership on Rod Cocks for his long term commitment to the Association. Congratulations Rod!

The election of the new Wandí Progress Association committee for 2010 gave few surprises, with what is essentially a reshuffle of positions from the previous committee. Yours truly was the only nomination for president, with Les Whiddett and Fred Erdtsieck as vice presidents, Sandra Knight as Treasurer, and Ken Workman as Secretary. Committee positions were accepted by Rod & Debbie Cocks, Jim Russell, Rod Pattinson, John Lydon, Wayne Tentori and Janet Carr.

Take care, and enjoy reading your Wandí Warbler.

Until next time,
Peter Hegarty.
WandiProgress@gmail.com

WPA COMMITTEE & MEETING DATES 2010

Dates for 2010 - 17 Mar, 21 Apr, 19 May, 16 June, 21 July, 18 Aug, 15 Sep, 20 Oct, 17 Nov, 15 Dec

President: Peter Hegarty

Vice Presidents: Fred Erdtsieck, Les Whiddett

Treasurer: Sandra Knight

Minute Secretary: Ken Workman

Committee Members: Janet Carr, Debbie Cocks, John Lydon, Rod Cocks, Jim Russell, Rod Pattinson, Wayne Tentori

The committee meets every third Wednesday of the month at 7.30pm. All residents are most welcome to attend or if you have some concerns in the Wandí area and would like the Progress Association to assist, please contact any member.

New committee members are always welcome and we would love YOU to become part of our community, contact Ken Workman on 9397 1060 or email woodboroughwa@bigpond.com for further details.

The Wandí Warbler is now available via email, please help the environment by joining our electronic mail list. Contact WandiProgress@gmail.com to be added to our database.



WANDI PROGRESS ASSOCIATION URGES RESIDENTS TO ASSIST IN THE CLEAN UP OF ROAD VERGES IN WANDI THIS CLEAN UP AUSTRALIA DAY

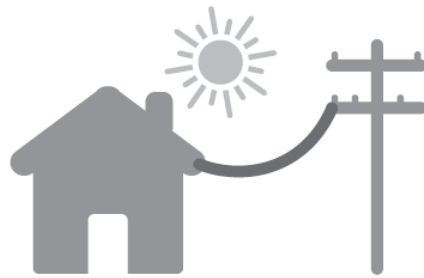
“Clean Up Australia Day is a fantastic, fun event where everyone in the local community can come together and pick up rubbish to conserve the environment. Just one piece of rubbish can make a difference.” Ian Kiernan AO, Clean Up Australia Chairman.

- **Clean Up Australia Day – Sunday 7th March 9am – 11am**

Wandi Progress Association has organised a local Clean Up Australia site at the entry to the Wandi Community Centre, De Haer Road, Wandi from 9am – 11am. Please turn up on the day with gloves, a hat, sturdy shoes, sunglasses and sunscreen and register as a volunteer. Children under 15 years old must be accompanied by an adult.

The Satterley Property Group has generously funded a mobile coffee van to provide refreshments for registered volunteers when they finish.

Any enquiries: Janet Carr, Site Co-ordinator 0418 947 463



Community contact session Western Power's proposed Banjup/Wandi zone substation

In line with our commitment to be available to the community, Western Power invites you to a second community contact session to discuss our recent land purchase in the Banjup/Wandi area (corner Rowley and De Haer Roads, Wandi), on which we are proposing to establish a zone substation sometime beyond 2020.

The session details are as follows:

Tuesday 23 March 2010

Wandi Community Hall, De Haer Road, Wandi

Presentations and Q&A session – 6pm (presentation to start promptly at 6pm)

Western Power staff available to take queries until 8pm

As requested at the previous meeting, Western Power will provide further information on planning and forecasting, and will outline our decision making process to explain why this particular site was selected. Community members will also have an opportunity to ask questions and provide comment.

For further project information or to RSVP for the session, please contact Mark Stevens on 9326 4144, 0419 197 001 or email mark.stevens@westernpower.com.au

For more information on our other projects, please visit www.westernpower.com.au or our blog site www.youhavethepower.com.au

Wandi Community News

Western Power's proposed Banjup/Wandi Zone Substation – Community Response

The Wandu Progress Association has sent a formal submission to Western Power outlining the residents concerns highlighted in the December public meeting. The letter highlighted the following:

- 1) Western Power has not sought to engage the local community in any consultation process prior to the purchase of the special rural residential property.
- 2) The Western Power presentation to the local community was not made before any property purchase, which has removed local resident's ability to understand the full impact on the local community before a location was acquired.
- 3) The proposed site location will require clearance of significant vegetation from the property which is contrary to special rural planning requirements.
- 4) Any power utility constructed on that site will by its nature detract from the intent of hobby farms and small acreage properties and could potentially adversely impact property values for the immediate neighbours.
- 5) Other similar sub stations appear to be cleared of large amounts of natural bush and are open and industrial in design and not in keeping with the special rural image of Wandu.
- 6) There are other already denuded locations along the Wandu and Banjup 132kV power line routes that are potentially more appropriate.
- 7) Whilst understanding the need for infrastructure the community considers that further planning should be implemented in respect of the residential and light industrial developments which are already approved for the Banjup and Wandu Kwinana Freeway corridor, with the zone power requirements being installed and paid for by the developers. It seems that the Wandu "special rural" residents are suffering as a result of developments which are outside of the special rural envelope.
- 8) Local residents have concerns about potential increase in noise levels and environmental issues concerning the Jandakot mound water reserves located below the proposed site.
- 9) Overall the Western Power community consultation process to date is considered by many residents as having been poorly handled by Western Power, especially in respect that the property was purchased without any prior consultation, the approach is that of "big brother" and really it comes across as a "fait au compli".
- 10) Being very environmentally and special rural community minded we are very conscious of the potential effect of an unsightly zone sub station, indeed many local residents voiced their concern directly to their staff.

FESA's StateAlert System now Operational

StateAlert automatically delivers emergency warnings direct to you when lives may be in danger in your neighbourhood. It does not replace current public information tools or the need to look after your own safety. It is an additional tool used to alert people in a specific location where there is immediate danger. All home phones (landlines), including silent numbers, are automatically registered. Mobile phones are automatically registered to the billing address which may be different to where you live. If you're not sure what address your mobile phone is registered to you should register. You also need to register if you want to receive alerts by email or for up to three additional addresses. You may want to register multiple addresses if you own more than one property, work away from home or have a friend or relative with special needs. Please see www.statealert.wa.gov.au or call 1300 253 787 for more information.

It is still "TINDERBOX DRY" in Wandu - When is the Bush Fire Danger Period over?

The summer danger period is **not over** when it becomes cool, cloudy and there has not been heavy rain. Some people tend to light fires and burn off at the first sign of cool weather, not appreciating that the bush is at its driest point due to it been at the end of a summer without rain. It is for this reason that the Restricted Burning Period when a permit is required to burn starts on the 1st April and goes to the end of May. There have been some significant fires over the years during this period. Remember to apply for a permit during this period from your local Fire Control Officer, who will be monitoring the dryness of the bush and the weather conditions; which can be unsettled that time of year.

On behalf of your local Emergency Services, thank you for your cooperation during the dangerous bush fire season.

Ray Sousa, Chief Bush Fire Control Officer.

Bushfire Threat not over Yet!

People living in or near bushland who have not yet developed a bushfire survival plan are reminded that Western Australia's bushfire season is well underway. FESA District Manager for Perth South Coastal Doug Smith said some people were still not prepared for bushfires despite seeing the devastating effect of several fires in the past few months

including Toodyay that destroyed 38 homes. Mr Smith said “Do not underestimate the physical and emotional stress of being in a bushfire with radiant heat, noise, smoke and burning embers flying around, if you haven’t already done so you need to develop a bushfire plan survival plan now to help you take action and avoid making last minute decisions that could prove deadly during a bushfire.”

When preparing your bushfire survival plan decide if you and your family will leave for a safer place, which may be to relocate to family or friends, or stay to actively defend your home. Your plan should cover a range of situations that you may be faced with, may vary depending on who is at home and should cover what you will do if things go wrong.

Decide before a fire starts where you will go, how you will get there, what will happen to pets and what belongings you will take. These are considerations that can’t happen at the last minute. They need to be well thought out and actions decided on now.

Develop your bushfire survival plan with your family and write it down.

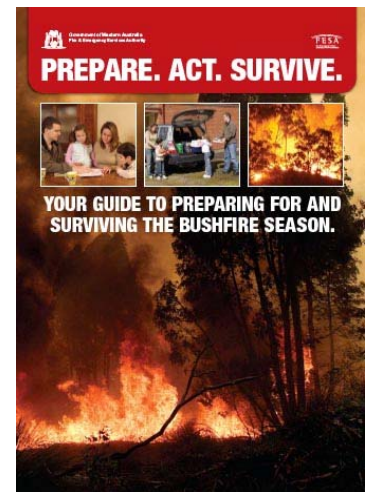
Ray Sousa, Town of Kwinana Chief Bushfire Control Officer, also reminds property owners to maintain their properties.

“With planning and effort the majority of houses in bushfire risk areas can survive most bushfires.”

“Clear the area around your home of all rubbish, long dry grass, bark and other material that may catch fire. Creating and maintaining a minimum two-metre gap between your house and tree branches will help to protect your home from embers. Keeping roof gutters and valleys clear of leaves and bark will also reduce the chances of your house catching alight.”

Residents are also reminded that homes with evaporative air conditioners are particularly at risk of catching fire from embers coming from bushfires or even small back yard fires. “If a fire starts in your air conditioner it can spread quickly throughout your home. In the case of a fire in the surrounding area, run the air conditioner to wet the filter pads and then switch the air conditioner off. If the unit can run water over the filter with the fan turned off, continue to do so. If the water cannot be run on its own, wet the air conditioner pads using a garden hose.”

Bushfire Survival Plan templates and other checklists are available in *Prepare. Act. Survive. Your Guide to Preparing For and Surviving the Bushfire Season* online at www.fesa.wa.gov.au or by calling FESA’s Community Safety Coordinator on 9323 9566.



Wandi Community Facilities

The Wandi Progress Association has been instrumental in supplying community facilities for the local community since its inception. The first request came from a group of locals who required somewhere to ride horses and house a club and everything has developed from there. When you get a group of people gathering they attract more people who have different interests and everything snowballs and we are sure the Wandi facilities will increase in size long after we have all left the area. The facilities that we now have are located on 10 acres of local government land set aside for community use. From memory the land was part of the Parry subdivision and like all subdivisions a percentage of land has to be allocated to the local authority for public use. Beyond the 10 acres we have a larger track of land that is deemed public open space as part of Magenup Lake and is incorporated into the Jandakot Regional Park.

Permanent Groups we have using the facilities are listed below:

Magenup Equestrian Centre groups – this is managed by a separate management committee and has about 6 clubs using the facilities year round.

Wandi Progress Association – 3rd Wednesday evening of the month

Wandi Craft Group – 1st & 3rd Thursday night

Wandi Landcare Group - Varies

Wandi Book Club - 2nd Tuesday of the month

Woodturners Association of WA Wandi Group - Every Wednesday morning

Woodturners Association of WA Wandi Group - Every Wednesday afternoon ladies group

Woodturners Association of WA Committee - 2nd Wednesday of the month

Woodturners Association of WA Wandi Group - Every Thursday evening

Western Australia Carvers Guild Wandi - Every Monday morning

Scroll Saw Club of WA - Every Tuesday morning
Southern Districts Triton Club - 4th Thursday of the month
Fine Woodwork Association of WA
Smithy's Boxing Gym - Every week night
Wandi Playgroup - Tuesday mornings
Hope Valley Dance Group - 2nd Saturday evening of the month
Medieval clubs (SCA & Grey Company) - Every Sunday
New Beginnings Social Club – meetings last Saturday evening of the month
Scrap Booking - various

We now have 3 or 4 caravan clubs that spend weekends on the oval and use the hall facilities allowing their more elderly members a desirable weekend away close to home. Three cycling clubs use the Wandi area for road racing and the facilities as a muster point.

Many of the groups have more than just daily or nightly meetings during the year:

The Medieval groups have weekend stay over's that incorporate between 2 or 3 nights, used for training.

Woodturners Association have up to 5 weekend workshops one with an international turner demonstrating.

Carvers Guild has up to 4 weekend workshops with one being allocated to an international carver.

There is the prospect of a new club the WA Marquetry Guild; this will be the first in WA.

The main reason for the clubs being attracted to the Wandi area is its excellent location and the assistance the WPA gives to developing groups allowing small clubs an affordable home to grow. Being run by community volunteers allows this to happen and everyone reaps the benefits.

In our future is the prospect of a new building being dedicated to Smithy's Boxing Gym and the woodworking groups. A spin off will be a larger change room shower toilet facility that will then be more suitable for the caravan clubs, cycling clubs and medieval groups that stay overnight, the hall has one male and female shower. A bore water purification system should solve our water use problems, the hall and clubrooms use rainwater. This new building will free up space used by the various groups and give them all room to expand and for new groups to develop.

If you are a member of a club or would like to start a new club that would benefit the Wandi community please contact one of the committee or attend a WPA meeting to discuss your proposal. **Contact Debbie on 9410 2009.**

Work to Commence on "Upmarket" Honeywood Estate in March

At the Wandi Progress Association AGM on the 17th February Satterley project manager Grant Singleton stated that work is scheduled to commence on the first stage of 40 blocks in March. He highlighted that the intent was that this subdivision would have considerable emphasis placed on the wetlands, preserving and enhancing them where possible. Possible walk and cycle trails were also mentioned. The conserved areas of native wetland and native bushland will occupy around a quarter of the land at the estate and remain home to a sustainable community of birds and other wildlife. The estate will be "upmarket" and generally not in the first home owner price bracket. It is hoped that the access road into the estate will take traffic from the rural Lyon Road. Some residents did not agree that this was the case and also lodged their views on the 6 larger blocks planned along Lyon Road, especially in respect of people backing out into the road. Mr Singleton stated that whilst he heard the comments the planning was approved and no changes would be contemplated.

The Redgum along Lyon Road has been earmarked for preservation within the public open space.

Wandi Progress Association names Rod Cocks as Inaugural Life Member

Rod Cocks was voted the inaugural "life member" of the Wandi Progress Association at the AGM, we all congratulate him on this award. Rod was a founding member of the Wandi Progress Association in 1987 and is still a member to this day. He moved to Wandi in October 1984. It was a new community with little facilities, which in those early days with no freeway, made our lifestyles a little more remote than today. Rod was instrumental in organising a public meeting in the year of 1987 at the Mandogalup Hall where the Wandi Progress Association was founded. The meeting was well attended and a committee elected from the floor. The founding committee put together a wish list which was canvassed around the Wandi Community with the aim of gaining an insight to residents' concerns.

This early plan is responsible for what we now enjoy as the amenities of this community. It included a hall, tennis courts, football oval and many other areas of interest. Many of these now exist on the community site today.

Rod became president in 1991 to 1993 and oversaw our first building project which was the building of the Mangenup Equestrian Centre. From 1994 to 1997 he was vice president overseeing the building of the Wandi Hall. By 2000 the completion of new community club rooms, tennis courts and a barbeque area added to the facilities provided to the community. In 2002 a children's playground as well as seating and covered pergola area were constructed. The

biggest undertaking though occurred in 2004. The project involved relocating the old Hope Valley Primary School from its site in Hope Valley to its current site within the Wandi Community Precinct. During this period Rod was severely injured in an accident at home, one that nearly cost him his life. After and through his recovery, Rod persisted to see the project complete and shows all too well his commitment to the community, which he has long been a part of.

In listing just some of the many projects undertaken above, we acknowledge Rod's skills in not only bringing these facilities to a successful conclusion but his fundraising expertise in raising the capital for such facilities. All that exists on the site would not be there today if it wasn't for his hard work.

With the vision and support of Rod Cocks there is no one more suitable to be awarded the Inaugural Life Membership of the Wandi Progress Association.

A Big Thankyou to Wandi Friends and Neighbours ☺!

Roz and John Deakin (7 Stefanelli) would like to say a big thank you to all their friends and neighbours, who over the years with their help, kindness and humour have made it possible for them to continue to live in wonderful Wandi 'village'.

Wandi Landcare Group.

Wandi Landcare Updates - I hope that everyone is well rested over the summer break. These past months have been very dry and the poor tubestock and even many of the established plants have suffered from a lack of rain. I hope that not too many of the seedlings that you planted at home have died. May it rain well soon!

Community Planting Days - The Community Planting Day for around the Magenup lake area has been set for Saturday 26th June, 2010. The ancillary Planting Day will be held on Monday 5th July 2010. This will give plenty of opportunity for volunteers to participate and it is all in a good cause. The planting site for this year will be at the entrance of the Nature Walk adjacent to the Magenup Riding Club. Work has commenced on the site and it will be ready for re vegetating on the planting days. It is a bit of an experiment but Angela Jakob and I have allowed for ongoing weed control and maintenance while the natives are becoming established so we're looking positively to the success of the project. This planting site is easy to access so more family members can participate. The WLCG wish to build an aesthetically pleasing vista to the lake entrance and you can be a part of that. I hope to see you on the day.

Wandi Nature Reserve - Monday 15th May 2010 has been earmarked to remove the last of the pigface at the Wandi Nature Reserve. Two teams will be required, one for spraying the interior infestations and another to remove the remainder around the fire break. The pigface has been removed over 2/3 of the Reserve through the great efforts of volunteers and DEC and now we just need to complete the job before the contract sprayers start attacking the annual veldt grass.

If you completed the herbicide course held through the WLCG and can help out, please contact me on 0428 604032 or email at wandilandcare@gmail.com.

Reports - I have some figures on the success rate of our previous plantings passed to me from Angela Jakob, the Bushcare officer or the Town of Kwinana.

1670 seedlings planted over winter 2009 and a 1566 Greenstock Maintenance count in October 2009;

The tube stock planted around the Community Centre had only an average survival rate due to the incredibly dry summer which was unfortunate but many of the trees survived which will give shade to future infill plantings.

If you have any questions please forward them to Angela Jakob on 9439 0418 or email her at angela.jakob@kwinana.wa.gov.au

Funding - I have applied for funding for the WLCG to allow us to continue with the courses which have been well received and also to supply WLCG member landowners with vouchers for plants. It has been given the thumbs up but at the time of writing this was not officially approved. Another good reason to become a member of the Wandi Landcare Group ☺.

Fred Erdsieck – Coordinator Wandi Landcare Group T: 9397 2232 M: 0428 604 032E: wandilandcare@gmail.com
W: www.wandilandcare.org

Focus on the Groups - Wandi Bookclub

Bookclubs meet all over the country and most have a similar format. Members all read the same book – fiction/non-fiction, Australian/international - and then at the meeting we discuss the various merits of the story. Whilst some Bookclubs are very serious, we are more informal but nevertheless we often have very divergent views about the books. Over supper we usually talk about other books we have read recently, movies or plays we have seen or just

generally put the world to rights. We meet on the second Tuesday of each month in the clubroom. Meetings start at 7.30pm and generally finish about 9.15pm. Books are hired for the month. The cost involved is \$8 per meeting which covers the book hire, room hire and tea/coffee. If you are interested in joining, please contact Marie Tully 9410 0245 or Janet Carr 9410 0982.

Green Skills Native Tree Decline Workshops

Wandi Resource Centre Hall Sunday 18th April 9:00am - 12:00pm

Serpentine Jarrahdale (Venue to be advised) Saturday 22nd May 9:00am - 12:00pm

Native tree decline is becoming alarmingly widespread across South-Western Australia due to a range of factors including insect attack, disease, water stress and loss of understorey vegetation. A common symptom is canopy decline, where the upper branches die off, leaving trees looking bare and twiggy. Consequences of native tree decline and subsequent death of native trees include loss of habitat for native birds and animals; and loss of aesthetic values.

Green Skills staff are helping local landholders prevent and manage tree decline on their properties by hosting 2 free native tree field days, and providing workshop attendees with the opportunity to receive a free tree treatment kit.

Green Skills project officer Laura McCarthy said the workshops cover all aspects of native tree decline, including how to recognise the early signs of decline, to prevent tree decline, and treat sick trees. "We hope to give landholders the knowledge and skills to feel confident in treating trees on their properties in order to prevent and reverse tree decline. There are a wide range of treatment options, including phosphate injections, nutrient implants, composting, and re-vegetation of understorey plants."

Workshop attendees will be invited to trial the effectiveness of a variety of treatment options and participants will be given the opportunity to receive a free tree treatment kit, worth over \$100 (while stocks last).

Bookings are essential so to register for a workshop, or for more information about tree decline, please phone or email Laura McCarthy on 9360 6667 or lmccarthy@greenskills.org.au.

Rare Orchids: The More We Looked The More We Found

Julia Cullity, Community Bushland Coordinator, DEC

The Department of Environment and Conservation (DEC) and Wandi Landcare Group surveyed Wandi Nature Reserve for a rare orchid *Caladenia huegelii* in spring this year and to our surprise found the population was much larger than previously recorded. Numbers have risen from three plants to 28 because for the first time we were able to do a complete survey across the entire reserve. It took us three days to search the 30 ha reserve and DEC greatly appreciates the time that Fred and Les from the Wandi Landcare Group gave up to take part. At times it felt we were searching for a needle in a haystack as we looked for the orchid flowers popping up at the level of the low shrub layer, but being able to notice the wealth and variety of other orchids and wildflowers gave us confidence that we were keeping our minds on the task.



Our discoveries this year have all been mapped and this will allow us to quarantine these rare plants during winter 2010 when we will begin comprehensive weed management for an invading perennial grass.

Commonly known as the Grand spider orchid, this plant is considered critically endangered under State law due to its small population size and increased threats from habitat degradation and clearing for urban development. Grand spider orchids are most commonly found on grey sand in banksia, jarrah and sheoak woodland between Wanneroo and Busselton. They can only grow in areas where a symbiotic fungus species exists; essential for germination and assisting plant survival with the uptake of minerals and nutrients. The grand spider orchid also has a specialist pollinator, a single species of thynnid wasp. The flower emits a pheromone which attracts the male wasp who,

mistaking the labellum of the orchid for a flightless female wasp, lands to mate but ends up spreading pollen. With such complex plant, insect and fungi interaction, it's important that not only the orchids but their habitat is retained and degrading processes are managed to keep the whole ecosystem functioning. A return visit to Wandi Nature Reserve in November showed that the wasp has been active as approximately one quarter of the grand spider orchids were pollinated this year.

As with most of our orchids they have an annually renewed underground tuber. The plants sprout each year after the first autumn rains, grow through winter and flower in spring (usually in a four week period in September-October) and then are dormant underground over summer. They tend to grow as single plants or in small groups and flowering plants are essential for identification as there are a number of similar orchid species. Because they may not flower every year the grand spider orchid is hard to survey and it's common to find flowering plants in one place one year and some meters away on another. It's best to assume that populations cover more area than flowering plants indicate. Next spring landholders with bush on their properties might like to have a good look around for these often solitary spider orchids and get in contact with DEC (email julia.cullity@dec.wa.gov.au) if they think they are growing on their properties. Often it's a case of the more you look, the more you find.



Les Whiddet displays newly found *Caladenia huegelii*

Wandi Playgroup Vacancies

There are a number of vacancies at the Wandi Playgroup. If you would like to meet with a delightful group of mums and let your children have the opportunity to play with a super range of toys / mix with others, the group would be pleased to see you. The Playgroup meets at Wandi Hall on a Tuesday at 9:30am. A small fee applies. Contact - Jenny (President) - 94379484 or Melissa - 93972841

Around the Resource Centre

BBQs

Don't forget that there are now a couple of free BBQ's, one near the tennis court and another on the "Wandi Resource Centre (Old Hope Valley School)" side. With the close access to the playground etc it is a great place to have those larger family gatherings. We ask that all you leave is your "footprints" along with a clean BBQ for the next user.

Tennis Courts

To book the tennis courts please phone Debbie (9410 2009) or Ken (93971060) between 9:00am and 5:00pm. The cost is \$5 per hour. Yearly memberships are available at \$125 as well. A \$20 key bond is required on both hourly and annual memberships. *Please take off the net tension after playing.*

MEN (and Women) of the Trees Rockingham Nursery Looking for more Volunteers

Men of the trees Rockingham Nursery produces over 200,000 seedlings annually for revegetation projects in local areas. Rockingham branch Manager Brenda Kent is looking for more volunteers who have a few spare hours a week. Most of the work is at bench height and efforts have been made to minimise heavy lifting. Contact Brenda on 9527 3142 or email treemen@three.com.au

Wandi Landcare / Progress Association Website

The Wandi Landcare Group and the Progress Association now have their respective web domains. They are www.wandilandcare.org and www.wandiprogess.org. There is still much work to be done but the sites will develop over time. You can also download the latest edition of the "Wandi Warbler" in full colour here.

Kwinana Hub Sold

The Kwinana Hub shopping centre has been sold, paving the way for a redevelopment as part of the Town Centre Revitalisation project.

Local Advertisements

Thermomix - The Most Advanced Kitchen Appliance Available Today - Eliminate Additives And Preservatives From Your Food.

More than 10 appliances combined in one compact machine.

Saving you -
time
Money
Space
And your health.



Call Cathy, your local consultant on 0437058560 For your free demonstration

EXCAVATION EXCELLENCE

- 5 Tonne Excavator
- Trenching
- Rockbreaking
- Battering
- Pool Excavation
- 20+ years experience
- Open to Challenges



Call Terry Marriott 0419 174 134
Office/Fax 9397 1310

Email: excavationexcel@bigpond.com

Rivergum Chalets - Margaret River



A tranquil forest retreat in the heart of Margaret River for that special relaxing break

Contact Vicki or Matt on Ph 08 97 57 2101

Email: info@riverglenchalets.com.au

Visit our Website for more details and on line bookings

<http://www.riverglenchalets.com.au>



gables - domes - flats - pyramids - carports

Ron Nash

e: prestigepatios@gmail.com

m: 0423 815 572

a: 358 Rowley Road, Wandu WA 6167

Happenings at the Hall and Resource Centre

Smithy's Boxing Gym - Boxing Training

Mon - Thurs 5:30 to 7:15pm



\$7 per night

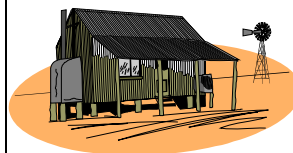
Phone Elaine on 94391078 or
Mob 0412404674

Email: elliejo@westnet.com.au

WANDI HALL HIRE

Phone Debbie Cocks on 9410 2009

for further information or
bookings



WANDI CRAFT GROUP



*1st & 3rd Thursday
of the month*

*A friendly group that meet for a chat and
participate in a variety of crafts.*

Contact Debbie on 9410 2009

OLD TIME FAMILY DANCE



**2ND Saturday
of each month**

7.30pm start

Live Band - Supper supplied - No alcohol
Contact Pat - 9439 2727

WOODTURNING CLUB



All meetings held in the Green Workshop
First & third Thursday of the month at 7.00pm

Wednesday
Men - 8.00am to 12.00
Women - 12:00 to 3:00pm

New members always welcome.

For further information phone Alan 9528 2520

TENNIS COURT HIRE

Have a fun day with the family or friends by hiring our tennis courts Or become a member with an annual fee. Healthy family fun!!



Cost is \$5.00 per hour per court with a \$20 key bond.

For more information or bookings phone Debbie Cocks - 9410 20 Workman - 93971060 between 9:00am and 5:00pm

WANDI PLAYGROUP



Tuesdays at the
Wandi Hall
9:30 am

A delightful group of mums and children meet every Tuesday

For further information contact - Jenny (President) - 94379484

Melissa - 93972841

Natalie - 94987210

WANDI BOOKCLUB



2nd Tuesday
of the month

Wandi Hall Club rooms 7.30 pm

Contact: Marie Tully 9410 0245.



WEST AUSTRALIAN GUILD OF WOODCARVERS INC. WANDI

This branch of the Guild meets in the green shed every Monday morning between 9.00am & 12.00. - Beginners or advanced welcome.

Contact - Fred Brewer 9419 3558

SOUTHERN DISTRICTS TRITON CLUB

Meet every fourth Thursday of the month at 7.30pm in the Wandi Hall Clubrooms.
Contact - Gary Withers Ph 9593 2317

SAVE EQUUS



Meet the
Magenup
Equestrian
Centre

1st Monday of each month, at 7.30pm.

All horse lovers are welcome

WA SCROLLERS

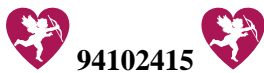
Members of the Australian ScrollSaw Network Inc.
Meet every Tuesday morning 9.00am - 12.00

Where: Clubrooms, Wandi Hall
Beginners welcome

Contact: Kevin Treasure - 9529 3227

Local Advertisements

Jane Silich
CIVIL MARRIAGE CELEBRANT



94102415

Mob 0401425404

info@janesweddings.com.au

www.janesweddings.com.au

Wandi Small Harvest

Unprocessed Bush Flower Honey

Bee Removal Services

Bush Maintenance Service

Selective Weed Spraying

Fred Erdtsieck Mobile: 0428604032

Tel: 93972232

Email: fred@wandismallharvest.com

Wandi Hair Studio
Hair, Nails and Makeup



Phone Karen

9410 2666 or 0417 928 699

by appointment only

116 The Horseshoe, Wandi

25 years of hairdressing experience

Peter Woodward's Lawncare Services



**Commercial &
Industrial
Specialist**

Fax: 9437 2999

Mobile: 0414 729 346



Local Rep. Barry Wyllie

Sales – Service – Parts

Re – conditioned units

Phone – 9410 1848

ABBA Earthmoving

- ✓ Earth moving
- ✓ Bobcat Hire
- ✓ Driveways
- ✓ Site Clearing
- ✓ Back Hoe
- ✓ Sand Supplies
- ✓ Sand Pads
- ✓ Compaction



Call Graham Hardy

Tel: 94371615 Mob: 0418 955 264



 **imagebox
photography**

weddings - portraits - events
& commercial

annette nash

m: 0432 722 362

e: a_nash3@bigpond.com

w: www.imageboxphoto.com.au

FLETCHERS
PROPERTY MAINTENANCE
Residential – Industrial – Agricultural

- Handyman Services
- Roof/Gutter Maintenance
- Painting and Decorating
- Retic Repairs
- Lawn mowing & all
Gardening Work



Call Neil - Your Local Tradesman – 0431 048594 or
93970572

Email: fletcherneil@msn.com

Industrial Sewing

Repairs to Horse rugs and associated gear stitching requirements

Canvas work including designing of boat and trailer protection covers

Customised sewing and design to meet your needs with quick turnaround and pick up service for those urgent jobs

Please ring Wendy to discuss on Ph 0402402451

Glenda Gittings

HAIRSTYLIST



040 555 3776

10 The Horseshoe, Wandi

Private Studio with Kid's Corner

SOLARTREND
SOLAR GRID CONNECT

POWERTREND
ELECTRICAL CONTRACTOR

E/C 007345

Jeremy Devenish

Mobile 0404 802 890
Email jeremy@powertrend.com.au

Phone 08 9414 7044
Fax 08 9414 7055
Address 124 Magenup Dve
Wandi WA 6167

Beat The Rising Electricity Costs!!

FALCON HOLIDAY BEACH HOUSE
Short Term Holiday Accomodation - 300 metres or
3 minute walk to the Kids Swimming Bay and Fishing
Beach - For that unplanned weekend or week away
- Short notice welcome



4 Bed, 2 Bath
Lounge and
Family Sleeps 8
Kitted out
kitchen & BBQ
Fully furnished
Far enough to get
away, not too far
to drive

Contact: Kim and Glenda Gittings - 0405 553 776 f
9410 2539 Email: iska@dodo.com.au

Proudly Sponsoring the Wandi Warbler

SY Knight & CO

CPA Accountants & Registered Tax Agents

PO Box 1401

BIBRA LAKE WA 6965

Ph: 08 94181522

Fax: 08 94181533

Email: syknight@iinet.net.au

*Like to advertise in the Wandi Warbler?
Contact the Editor on 93970249 or email
jimrussell@iceweb.com.au*

Jumping the Garden Fence: Invasive Garden Plants in Australia

Did you know that the ten most serious invasive garden plants available for sale in Western Australia are the Arum lily, Black flag, Broadleaf pepper tree, Coastal tea tree, Freesia, Spotted gum, Sweet pittosporum, Sydney golden wattle, Watsonia, and Weeping white broom? Many other major invasive plants (both introduced and native to Australia) are available for sale by nurseries in different States or Territories. This includes plants that are recommended for national eradication, or those that are declared noxious and been eradicated from only one State or one region of a State. Just one escaped invasive garden plant - Lantana - now degrades over 4 million hectares of Australia's environment. Their combined cost to Australian agriculture should they become invasive is estimated to be \$83million.

We will be focusing on Western Australian invasive weeds in future issues. Here is the first one thanks to the WWF.

ARUM LILY (*Zantedeschia aethiopica*) - Araceae

Weed, Quarantine Weed, Noxious Weed, Naturalised, Native Weed, Introduced, Garden Escape, Environmental Weed, Cultivation Escape.

Native to southern Africa Arum lily is also known as a Lily, Egyptian lily, Jack in the Pulpit and White arum lily. It was widely promoted in nursery catalogues in Victoria between the 1850s and 1880s and is still popular in the florist trade, being traditionally associated with funerals. The cultivar 'Green Goddess' is currently fashionable in home gardens.

Arum lily is a perennial herb with large dark green leaves up to 450mm long and 250mm wide. The small yellow flowers are borne within a large funnel shaped white bract recurved at the tip. All parts of the plant are toxic when eaten raw. Arum lily spreads by seed and root fragments. It is a serious weed of wetter pastures in the Margaret River area of Western Australia where it has been declared noxious. It also grows among heath and on sand dunes on Garden Island. Arum lily competes with pasture for nutrients and space and may completely replace pasture species in grazing areas. It is also toxic to stock, especially cattle.

Find an interesting 173 page report on this at http://www.wwf.org.au/publications/jumping_the_garden_fence.pdf

Do you have any useful community news such as crime in the area etc? Contact the Editor on 93970249 or email jimrussell@iceweb.com.au