



# CHIPS

## WEST AUSTRALIAN GUILD of WOODCARVERS Inc

### ***JULY 2016***

*From the President's desk*

*Dear Fellow Carvers*

*I hope you are all working hard on your entries for the Wood Show, both for the competition and the display.*

*We have another Saturday session at **Wandi on 9 July** ( 9am to early pm-enjoy a bbq with saggars provided by club) to finish off the items for sale at the show. Please come along to help the club, and to enjoy some fellowship. The last session was most enjoyable. See below the results of our efforts.*

*We are also looking for people to help with transport and setting up of equipment for the show on the Thurs 4 Aug. This is your club so how about getting involved. See below for contact details if you can help*

*Best regards* *Edith*



## **WOOD SHOW**

---

- **PERTH WOOD SHOW REMINDER**

---

Hi all,

We are now about 5 weeks away from the **2016 Perth Wood Show** (5<sup>th</sup>, 6<sup>th</sup> and 7<sup>th</sup> August) and in particular, the **Doug Shaw Woodcarving Competition**. Attached to this edition of CHIPS Newsletter is a copy of the Application Form for those who may have misplaced it. The Form registers your carving for either the **competition** or as a **display** item, so please fill them in as soon as possible and send them to Jim van Brink. (His contact details are at the bottom of the Application Form). To help Jim in planning the display stand layout we would ask you to have your Application Form in by **Thursday the 21<sup>st</sup> July**, (the **form only**, not your carving/s). Those we don't need until **Thursday the 6<sup>th</sup> August**. On Behalf of both the Guild Committee and the Wood Show Committee, I would like to thank all those involved with the making of cheeseboards and serving platters, which will be sold at the show. Your involvement is much appreciated. Well done.

For members who are still working on of the above, please return them to Wandi Shed by Monday 4<sup>th</sup> July, so that they can be finished off at the Saturday 9<sup>th</sup> July workshop.

See you at the Wood Show 2016 and good luck with your entries

Kind Regard

Patrick Pierce  
Treasurer/ Wood Show Committee Member.

- *Raffle prizes. Karel Groeneweg and Jim v Brink have made a jewellery box( see below for details) and Wally Kleber will make a set of salad servers featuring wood spirit heads. The third prize will be a set of three fish shaped platters made by members at Wandi.*
- *Without a sufficient number of entries there can be no show. So please submit your entry forms as soon as possible. The entry form is attached to this edition of Chips.*
- *Documents regarding entries and the stand manning roster have been sent to you previously by Patrick Pierce. If you have not received the documents please contact Patrick on 0430211552*
- *A workshop was held at Wandi on 14 May to make items for sale at the Show, to raise funds for the Guild. We encourage members at other centers to do the same. Everything is welcome.*

*Here are some photos of our efforts*



Patrick Pierce at work



Jim van Brink-master  
of the bandsaw



Edith and Bob Brown



A shoal of fish



Trusty cheese board

## WORKSHOP WITH HAPE KIDDLE

*Hape has advised us that he can no longer do a workshop for the club. He stated that he realized that he was spending too much time away from his family, and naturally his family is his priority.*

*A double disappointment after Peter Benson pulling out.*

*It is too late to arrange for another marquee carver, so we have decided to run a workshop on the same date (Sat 24 Sept). Details are still to be worked out. We do have Bob Pollock, Bob Svendsen and Wally Kleber lined up as instructors. Wally has become adept at Green Man items. So maybe that will be his topic.*

*It will be at Guy's place at 4 Blamey Place in O'Connor, which seems a less daunting journey for our Warwick colleagues than Wandi. From 9am to 3pm. A BBQ lunch will be available at a nominal price.*

*Put this in your diary, and watch this space for further news.*



One of Wally's Green men

## WANT AN HEIRLOOM

*I mentioned that Karl Groeneweg and Jim van Brink have collaborated in making a jewellery box as a raffle prize at the Wood Show. Well here it is. Pretty good eh!*



*Even if you do not intend to go to the Wood Show you can get raffle tickets. They are \$1 or 3 for \$2. Contact Patrick Pierce (see details in contact panel below) to have a chance of winning this treasure.*

## **HAVE A GO DAY**

*This event is put on by the Seniors Recreation Council of WA. It is a venue for clubs such as ours to publicize their activities. Typically we would have a table showing examples of our carvings, some literature and perhaps people demonstrating simple carving techniques.*

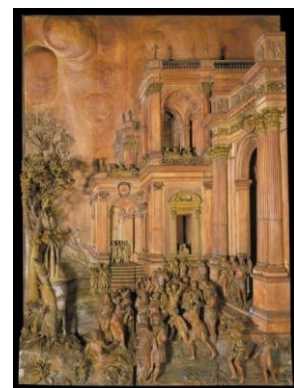
*The event takes place on Wed 9 Nov from 8.30am to 3.30pm at Burswood Park, Great Eastern Highway.*

*It would be a good chance to try for some new members, but we would need a team of about 4 volunteers. If you are willing please email Bob Tanner on [barry.tanner76@yahoo.com.au](mailto:barry.tanner76@yahoo.com.au) Registration for the event is required by 16 Sept*

## **MAKING A GRINLING GIBBONS CARVING**

*Guy Weguelin passed on an article to the club with the above title. Just a bit of background in case you are not familiar with Grinling Gibbons. He was a master carver working in Great Britain in the years either side of 1700. He was certainly very commercially minded and his cliental was limited to those who could afford his expensive work- pretty much the church and the aristocracy. So his work, which is mainly deep relief, can be found mainly in stately homes and cathedrals and churches. There were lots of craftsman in this field, both in Great Britain and Europe. It is arguable that Grinling was the best in Great Britain-I use the term Great Britain as his period was before Scotland and Ireland entered into union with England to form the United Kingdom-ironically at the moment perhaps in the process of disuniting.*

*The document is 17 pages of technical, historical and craft information, and points out the superiority of European Lime for the type of carving Grinling specialized in. Here are some examples of Grinling's work to whet your appetite.*



*I have prepared an edocument copy of the article. If you would like a copy I can email it to you-let me know. The document is rather too large to copy to snail mailers.*

## **A LITTLE BIT OF HUMOUR**

*After a bit of trouble at the old folks care home the manager announced*

*"The female area is out of bounds to males, and vice a versa. Anyone found contravening this rule will be fined \$10 for the first offence, \$20 for the second offence and \$100 for the third offence"*

*A chirpy nonagenarian sitting at the back called out "How much for a season ticket"*



## **HELPING THE BICHE COMMUNITY IN THE SOLOMON ISLANDS.**

*I have been advised by Elizabeth Manning that her contract as a volunteer environmental consultant to the community at Biche is coming to an end, and she cannot say when it will be renewed, if at all. So she has advised us not to collect any more material for now, as there is no way to deliver it.*

*She told me that the clothing sent was received with great enthusiasm. I have collected some embroidery material through another organization, which will be of use to the ladies of Biche.*

*Elizabeth also told me that during her last visit the community made a 60 feet long dug out canoe from a single tree trunk. It was launched successfully. Perhaps we will see a photo in due course.*

*The donations we have made will really well used-thanks to every one concerned.*

## **Diary Dates of Guild Events for 2016**

**General meetings** held probably at Wandi. July 11, Aug 8, Sept 12, Oct 10, Nov 14

**Wood Show** 5,6 and 7 Aug Set-up Thurs 4 Aug

**Workshop** Sat 24 Sept at Guy's place

**Sausage sizzle** Sat Oct 8 at Bunnings Cockburn

**Christmas lunch** Sun Dec 11 at The Pavilion Wandi



## CLUB GENERAL MEETING MINUTES

*President Edith has asked me to attach a copy of the General Meeting Minutes. Those for the June meeting are attached. They have not yet been presented to members for approval -that will happen at the July meeting.*

### OFFICE BEARERS 2016

Edith Peel	President	95274124	23 Calume St	Hillman 6168	
Bob Tanner	Secretary	93641830	66 Bedford Rd	Ardross 6153	barry.tanner76@yahoo.com.au
Patrick Pierce	Treasurer	0430211552	9 Cukela Ct	Atwell 6164	ppierce@iinet.net.au
Bob Tanner	Editor	93641830	66 Bedford Rd	Ardross 6153	barry.tanner76@yahoo.com.au

## Carving Groups

### **Applecross Area:**

Meet Tuesday 3:00 – 5:00pm  
Applecross SHS, East Entrance  
37 Ardessie Street, Ardross  
Contact: Ron Green 9330 2623

### **Rockingham Area: (55+ year olds)**

Meet Tuesday 9:00am to Noon  
Rockingham Autumn Centre  
McNicholl Street, Rockingham  
Contact: Karel Groeneweg 95281187

### **Warwick Area:**

Meet Friday 3:00 – 5:00pm  
Warwick Senior High School  
355 Erindale Road (North End)  
Contact: Vicki Nicholson 9309 2652

### **Wandi/Anketell/Canningvale/Kwinana**

Meet Monday 9:00am - Noon  
Wandi clubrooms  
302 De Haer Road Wandí  
Contact Patrick Pierce

