



# CHIPS

WEST AUSTRALIAN GUILD of WOODCARVERS Inc

MAY 2017

*From the President's desk*

*Dear Fellow Chippies*

*The months are flying by. It is only 3 months to the Wood Show. I hope you have all started on an entry or few.*

*We have had a busy time in the last few weeks at the Saturday meeting-it is good to see that we have a new member who can come only on a Saturday or Public Holidays. Let's hope for a few more.*

*Quite a few members have brought in their Relief Project pieces on a Saturday. It is interesting to see the different ideas, and to see how they are progressing.*

*Recently Bob Svendsen, Fred Smith, Karel Groeneweg and I manned a table at a Have-A-Go Day at Rockingham. We displayed quite a variety of the club's work, with a lot of interest from the public.*

*Something that amused me was that a man from the Rockingham Mens' Shed took some of our leaflets to give to women who inquired at his club about membership, but cannot join as they do not have female members. He asked if we did. I said "Yes-and I am the President." That set him back on his heels a bit.*

*Many thanks to Stephanie Ryan for coming all the way from Dwellingup to present a workshop. It was very well received by those attending. See the article and photos later in this edition.*

*Hope to see you soon. Regards* **Edith**



## **RELIEF CARVING PROJECT**

*Members are working at different paces on their component. Indeed some have already finished. Some are pretty good. It is not a competition so don't be shy. The project is to show what our members can do in 2017.*

*Just to repeat that we require that you do **not** apply finish to your component. A common finish to all components is required, together with a consistent result. To this end it is proposed that the finish is applied by a small team of members with experience in this aspect. We ask that at the required time you present your component in a condition ready for application of the finish-that is clean and sanding is complete.*

*In the meantime we ask that you bring your component in whatever stage of completion to Wandi on Saturday July 1. Just a friendly discussion on progress.*

## **A JOURNEY (1)**

*"Art is running away from home without leaving home." The art of woodcarving is a journey that takes the carver to a whole new world of amazing discoveries that includes creativity, technique, imagination, friendship and an inner tranquility of accomplishment. What does every carver do upon finishing a carving project? Look forward to beginning another carving project.*

## INTRODUCING –KAREL GROENEWEG

*Karel is no mean wood carver, but he has many other skills. Many of you would be familiar with the boxes Karel has made for use as the major raffle prize at the Wood Show, often in partnership with Jim van Brink. They are always well received by the public. Often they are jewelry boxes. I suspect that ladies buy the raffle tickets thinking that if they win the box then their husband will be obliged to buy the jewelry. Here is a box that Karel made recently. It has been on display at Wandl.*

*As they say “But there’s more. “ clocks he has made. Beautiful need a special clock Karel is your Not at all like those you can buy on Ray Retzlaff’s wife bought one-I’ll Even more-Karel has just about working his way through a anything he can’t do.*



*Recently Karel has been showing us the work, and every one unique. So if you man. Even more-Karel can make banjos. the internet. have to find out how that worked out. filled his house with fine furniture, complete book of designs. Is there*

## THINK BIG

*A Chinese artist has won a place in the Guinness Book of Records after creating the world's longest wooden carving. Zheng Chunhui, a famous wood carver, spent four years creating the artwork which is over 40ft long and made from a single tree trunk. The scene is actually a copy of the famous Chinese painting 'Along the River During the Qingming Festival' which was created over 1,000 years ago.*

Read more: <http://www.dailymail.co.uk/news/article-2509367/Guinness-Book-Records-creating-worlds-longest-wooden-carving.html#ixzz4dF5TH8tl>

Follow us: [@MailOnline on Twitter](#) | [DailyMail on Facebook](#)



## A BIT OF HUMOUR



## ANNUAL SUBSCRIPTION

*Most members have submitted their subscription, but a few have not. Perhaps you have decided not to remain a member. If so we are sad to see you go. As a pastime wood carving ticks quite a few boxes. It is relatively inexpensive, it is not dangerous, it is satisfying (sometimes), it requires both physical and metal skills and the public is usually amazed at what we achieve. So perhaps you could reconsider.*

*Maybe you have simply overlooked sending in your subs. If so –show us the money.*

*Here are the details of electronic funds transfer provided by Patrick if you choose to go that way.*

*On your Bank's webpage there should be four "Fields" (or Boxes) One each for **BSB** number, one for **Account** number, **Account Name** and one for **Description**. Each bank may vary in layout; however I'm hoping that these four boxes are available. (I know the BSB and Acct. No./name have to be, but some may not have a description box).*

*If you have the boxes I have described then I would ask you to fill in as follows.*

BSB: 036308

Acct No: 102673

Acct Name: West Australian Guild of Woodcarvers Inc.

Description: Your name here - Fees

*It's important that you provide **your name** in the Description box and if possible the reason for payment. If there is no room for the later then leave it off. I can work out what it's for by the amount.*

*If your bank webpage does not provide a "Description Field" then you are going to have to email me, (**my email address is in "Chips"**) advising me that you have done a bank transfer and include the date you d*

*If you pay by cash please make sure that Patrick knows in writing whose subscription it is. For example put the correct amount of cash in an envelope with you membership form, and your name printed on the outside of the envelope.*

## **OUTREACH**

*We are always on the lookout for new members. By far and away the most successful means is by word of mouth. If you think one of your acquaintances is a possible recruit show them some of your work. They are sure to be impressed. Then put the hard word on them.*

*Recently President Edith and some members spent the day at Rockingham showing our wares. Here are some photos taken by Bob Svendsen.*



*Edith and Fred Smith chipping away*



*Edith still chipping away and an interested bystander*

## **WORKSHOP-THE EYES HAVE IT**

*15 members attended the workshop on eyes given by Stephanie Ryan. This workshop was for members who want to go the extra distance to give their work a more authentic appearance. It really is worth the extra effort. Stephanie described how to make an eye from scratch using wooden dowels. She then revealed the "cheats" way with beads purchased from the internet. She also dealt with creating special effects by inlaying to create a slit pupil which is often required. The reaction from members was very enthusiastic. We look forward to seeing the results in the not too distance future. So many thanks to Stephanie. I am sure there are lots more topics in her repertoire we could all benefit from. Here are some photos*



*Stephanie and the class*



*Stephanie, Fred Smith and the back of Pres Edith's head*



*Intense concentration*

*Incidentally Wandi is a very good venue for workshops of this size. Also you can see from the middle photo the adjoining workshop in the background.*

*The Guild has decided to purchase some of the beads Stephanie mentioned. These will be available to members free of charge in reasonable quantities. Contact Patrick - there might be a small delay.*

*Thanks to all who made it happen, especially Patrick and his wife for the BBQ lunch included in the cost of the workshop*

For those of you who could not attend the workshop, but would like more information, Stephanie provide some very useful note-easy to follow. However they are rather too voluminous to be included here. But never fear-if you contact Patrick Pierce he will be glad to send you a copy-preferably per email

## **TREASURER'S REPORT March 2017**

### **General Comment**

Subscription fees continue to be submitted. Other than that a quiet month.

### **March 2017 - Balance Sheet Summary**

#### **Receipts**

- ☑ Annual Fees **\$385**
- ☑ Donation **\$50**
- ☑ "Eyes have It" Workshop **\$50**
- ☑ Bank Interest **\$1.91**

The total receipts for December being; **\$486.91**

#### **Payments**

- ☑ Stamps – B. Tanner **\$20**
- ☑ Printer Ink – B. Tanner **\$42**
- ☑ Lime Wood - P. Pierce **\$106**

The total debits for the month amounted to; **\$168**

As of the **31st Mar. 2017** The Guild's Bank Balance is **\$8418.19**

#### **Memberships**

11 Members paid in March, bringing the total to date up to 33.

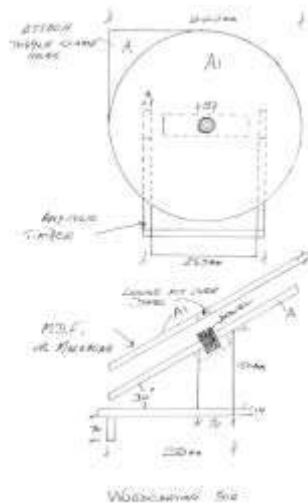
Patrick Pierce – Treasurer

West Australian Guild of Woodcarvers Inc.

## **RELIEF CARVING JIG**

Ron Jones brought in to Wandi such a jig which had been made by George Ferrara (a former member). The jig is essentially a circular lazy- susan surface mounted on an inclined support that rotates on a dowel fixed to the backboard. Your relief item is fixed to the lazy-susan surface somehow. The lazy-susan is rotated to your required position and then clamped to the backboard using a clamp of your choice. George's jig uses a toggle clamp, but you might have difficulty locating one of those.

Ron kindly offered to prepare a drawing which can be used by members to make their own jig. Here is the drawing.



## **A JOURNEY (2)**

*The real joy for the woodcarver is in the actual carving process rather than the finished carving. The destination of a finished carving may be as a gift, a competition entry, a commission sale or a dust collector on the shelf. All the trophies of finished carvings are nice to look at, but the heart and soul of the carver is to do the actual carving, the journey, rather than looking at the souvenirs of the journey.*

## **Diary Dates of Guild Events for 2017**

**General Meetings** at Wandi on the following Mondays

8/5, 12/6, 10/7, 14/8, 11/9, 9/10, 13/11, 11/12

**Saturday mornings** at Wandi on 6/5, 3/6, 1/7, 5/8, 2/9, 7/10 and Relief Project items to be brought in on 4/11

**Wood Show** (if there is one) early August

**Sausage Sizzle** Bunnings Cockburn Central 7 Oct

**Christmas lunch** The Pavilion Wandi 10 Dec

. Just a point of clarification about the Saturday meeting. Patrick opens up the workshop at 9am so come along anytime after that. Come to use the facilities, or just to have a chat with fellow carvers

### **OFFICE BEARERS 2016**

Edith Peel	President	95274124	23 Calume St	Hillman 6168	
Bob Tanner	Secretary	93641830	66 Bedford Rd	Ardross 6153	barry.tanner76@yahoo.com.au
Patrick Pierce	Treasurer	0430211552	9 Cukela Ct	Atwell 6164	ppierce@iinet.net.au
Bob Tanner	Editor	93641830	66 Bedford Rd	Ardross 6153	barry.tanner76@yahoo.com.au

## **Carving Groups**

### **Applecross Area:**

Meet Tuesday 3:00 – 5:00pm

Applecross SHS, East Entrance

37 Ardessie Street, Ardross

Contact: Wally Kleber on 9316 0563

### **Warwick Area:**

Meet Friday 3:00 – 5:00pm

Warwick Senior High School

355 Erindale Road (North End)

Contact: Vicki Nicholson 9309 2652

### **Wandi/Anketell/Canningvale/Kwinana**

Meet Monday 9:00am - Noon

Wandi clubrooms

302 De Haer Road Wandi

Contact Patrick Pierce

