

WANDI WARBLER

WANDI PROGRESS ASSOCIATION INC.

All correspondence to: The Secretary, 400, DeHaer Rd, Wandí, WA 6167.

EDITOR Ph: 93970249

September 2008

Presidents Report

Firstly, I would like to thank all those who registered to receive the Warbler by email. This edition will be distributed electronically to those people. Initially you will also receive a paper version in your mailbox, but once we are established you will just receive the electronic version and thereby assist us in not only saving money, but also resources. If you haven't yet registered, but would like to do so, just drop me an email giving your details to WandiProgress@gmail.com.

Speaking of resources, things are ticking over nicely at the Wandí Resource Centre. Thanks to Rod Cocks's tireless work there are now very comfortable table and chair sets under the protected areas at the Resource Centre's barbecue area. Also we are receiving more and more applications from groups wishing to utilise the Centre and after all the hard work it is great to see these facilities being adopted by groups so readily.

On the landcare front, Fred is keeping up his dynamo reputation and has already had three or four separate areas around Magenup Lake planted out with numerous seedlings this season. He has also obtained funding and organised training for landcare members in several areas including weed control and native plant propagation. For more details see his report later in this edition.

The Progress Association has also assisted Greenskills in managing sizable grants allowing them to continue with their Native Tree Recovery Program in both Wandí and Serpentine/Jarrahdale areas. You will see further information on this program also in this edition.

Take care, enjoy the season, and enjoy reading your Wandí Warbler.

Until next time,
Peter Hegarty.
WandiProgress@gmail.com

The committee meets every third Wednesday of the month at 7.30pm. All residents are most welcome to attend or if you have some concerns in the Wandí area and would like the Progress Association to assist, please contact any member.

New committee members are always welcome and we would love YOU to become part of our community, contact Ken Workman on 9397 1060 or email kgworkman@oceanbroadband.net for further details.

WPA COMMITTEE & MEETING DATES 08

Dates for 2008 - 17 Sept/ 15 Oct/ 19 Nov/ 17 Dec

President: Peter Hegarty

Vice Presidents: Fred Erdtsieck, Les Whiddett

Treasurer: Sandra Knight

Minute Secretary: Ken Workman

Committee members: Chris Chalmers, Debbie Cocks, Shane Addis, John Lydon, Rod Cocks, Jim Russell, Rod Pattinson

The Wandí Warbler is now available via email, please help the environment by joining our electronic mail list. Contact WandiProgress@gmail.com to be added to our database.



Wandi Community News

Big Plans for Wandi go to Council

The Satterley Property Group is to submit the local structure plan for its Wandi landholding to the Town of Kwinana next month for review and comment.

The new design allows for a train station site about 600m south of Rowley Road as approved by the Western Australian Planning Commission. The main entry road will branch off Lyon Road and meander through the urban land linking up with the future district centre proposed at Anketell Road.

The design is built around saving three key wetland areas as identified under the Eastern Residential Intensification Concept as well as examples of upland vegetation.

A special residential strip of 2000 square metre lots is proposed along Lyon Road and a primary school is shown on the corner of Darling Chase and Lyon Road. There is also local shopping planned around the future train station and a site for community purposes.

When formally approved there will be about 1200 residential home sites created over a period of six years. Development is expected to commence mid 2009 with the first lots going to market in spring the same year.

The Wandi Progress Association is hoping to arrange a community briefing shortly.

Around the Resource Centre

A “busy bee” installed new seats under the shade areas near the BBQ. This is now a great place for that family BBQ or group events.

As a result of leaks we are getting quotes to fix a roof apex flashing on the Resource Centre Shed.

Recreational Group News

The Bootscooting group has left the hall after many years, we are sorry to see them go.

Boxing Training

We welcome a new boxing group “Smithy’s Gym” who are utilising a couple of the classrooms for training. This happens Monday to Thursday 5:30 – 7:15pm, cost is \$5 / night. The group is small and Wandi residents are welcome. So go along and get fit. Contact Elaine for more details on 94391078, mobile 0412404674 or email elliejo@westnet.com.au.

Golf Practice on the Oval

Please note that owing to safety concerns golf practice is not permitted on the oval. People have been hitting golf balls from the oval onto the equestrian arena, this is obviously very dangerous.

Kwinana Festival, Bush Fire Games, Emergency Management Expo

These 3 free events will be held at Calista Oval Sunday 26th October 2008, everyone is invited.

Ocean Broadband

Have you been experiencing problems with your Ocean Broadband Service? Please let me know so that we may be able to get an overall picture of the situation and get it addressed as a community. jimrussell@iceweb.com.au or phone 93970249

Bushfire Ready Action Group – Wandí Community Meeting to Assess Interest

Monday 13th October – Wandí Hall – 7:00pm

This is paramount to your family's safety - Come along and hear the following bushfire experts highlight the advantages of such a group

Ray Sousa - Community Emergency Services Coordinator / Chief Bush Fire Control Officer

Steve Treeby – Captain Mandogalup Bush fire Brigade

Phil Brown – Fire and Emergency Services Authority BRAG Officer

The potential for severe bush fires exists every year no matter where you live in Western Australia. This is certainly true for a rural bushland area like Wandí. Whilst we all hope and pray that a large bushfire will not hit us it is a matter not of “if” but “WHEN”. The reality is that firefighters may not always be available to protect every home from bush fire, especially when it is a major bush fire or a large number of fires in the same district – as was the case in the 2003 Canberra fires. This means that residents and homeowners must share in the responsibility for their own fire safety.

The good news is that FESA’s Bushfire Ready Action Group (BRAG) program can help you and your neighbours learn about fire risks in your area, ways to reduce those risks and what you can do if a bushfire threatens your home and family.

There are many benefits of forming or joining a BRAG group:

- **Learning how to prepare and protect your family and property from bush fire.**
- **Preparing your own survival plan.**
- **Reducing the cost bush fire has on life, property and the environment.**
- **Providing opportunities to meet neighbours and develop support networks.**

BRAG is flexible and community driven. Each BRAG group is unique and self-governed with members deciding when, where and how often they meet. Members can also decide what components of the program they wish to use. These can include:

- **Bush fire awareness and preparedness training.**
- **Making plans to care for the elderly, disabled or other less able-bodied people in the street in the event of fire.**
- **Nominating a safe house in the street for others to shelter in.**
- **Developing a network with your neighbours to improve the chances of receiving adequate warning of fire.**
- **Organising tours to familiarise neighbours with each others’ fire fighting equipment.**
- **Developing and undertaking passive and active fire prevention strategies to protect life and property from bush fire.**

Bush fire survival training in the event you are in your home, in a car or on foot during a bush fire incident.

Preparation for Bush Fire Season

Just a reminder that permits to burn are required to burn from the **1st October**. Permits can be obtained from volunteer Fire Control Officer, Steve Treeby on **0408 988 122**. Steve can also give you advice on fire prevention. It is not too early to start clearing about around your buildings in preparation for summer. Fire breaks and fire prevention work has to be done before **1st December 2008**. Fire laws will be enforced to help protect the community. If there is a bush fire would you go or stay to protect your property? What about your pets? It is worth thinking about these issues now; due to the changes in the weather, we may have an early summer this year.

Evacuation, Welfare Plans.

These are again been reviewed in preparation for summer.

For more information on Emergency Management issues contact Kwinana Community Emergency Services Coordinator / Chief Bush Fire Control Officer Ray Sousa on **9439 0221**.

Prepare for bushfires ... stay and defend or go early

The most frequently asked question during a bush fire is "Should I stay and defend my property or go early?"

If you have prepared your home prior to the bush fire season and maintained that level of preparation, and are physically and mentally prepared, your home may provide you with a safe option from which to **stay** and defend during a bush fire.

If you decide to **go**, do so early. This is much safer than trying to make a belated dash escape on roads covered in thick smoke or fallen trees. Emergency vehicles are also in danger of being hit by other vehicles in thick smoke.

Now is the time to review your Bushfire "Stay or Go Kit". Stay and Go kits or DVDs can be delivered by Mandogalup Bush Fire Brigade or Council Officers, just contact Steve or Ray on the listed numbers.

Full details, more information and pdfs are available on the FESA website

<http://www.fesa.wa.gov.au/internet/default.aspx?MenuID=325> .

It is also worthwhile adding the emergency alerts website to your internet favorites so that you can get updates on a bushfire in the area. <http://www.fesa.wa.gov.au/internet/Alerts/default.aspx#> .

In addition it is worthwhile remembering that 720 ABC Radio also broadcast alerts at 15 minutes past the hour and 15 minutes to the hour or ringing 1300 657 209 for regularly updated messages.

Fire Water Tanks

A new Fire Water Tank will be installed shortly at the Equestrian Centre, near the existing fire vehicle filling location. The tank at Wandi Drive is also been upgraded. This will give additional protection during the summer / fire period.

Help the Bush Fire Brigade Volunteers Help You

With the advent of people locking gates and having automatic gates thought needs to be given to access for emergency fire vehicles.

One option is to have an additional, traditional gate into the firebreak area. This would allow fire vehicles to cut a padlock and enter your property via the firebreak.

One of the main fire vehicles we use in the event of a bush fire is a 9 tonne 4 wheel drive truck which carries 3000 litres of water. For us to use this vehicle to protect your property your firebreaks need to comply with the 3 metres wide, 3 metres high clearance.

Also bear in mind your driveways need to be maintained to this clearance as well. The vehicles needs to be able to gain access to your firebreak from your driveway.

For safety reasons we cannot guarantee our volunteer fire fighters will enter properties if there is danger to them of being trapped by not having a clear access.

For further information or advice please contact Steve Treeby, Captain, Mandogalup Volunteer Bush Fire Brigade on 0408 988 122.

Wandi Landcare Group under New Management.

So much has happened since the June edition of the Warbler. There has been a change of the WLCG coordinator. Ray Carter could not continue the position as he had other commitments but I'm happy to say that he is still there to help out when I need him. As the new coordinator, I aspire to take the WLCG to the next level. We also had two plantings out on the lake which were a great success. Thanks again to all the volunteers that helped out on those days.

I would like to introduce myself to those that don't know me. My name is Fred Erdsieck and I've been a Wandi resident since 2002 and became a member of the Wandi Landcare Group whilst Kerry Morgan was still the coordinator. I'm also a Vice President of the Wandi Progress Association. I used to work up north and overseas in the pearling industry which allowed me no free time to really participate in landcare activities but now as my work has slowed, I find that I can volunteer much more of my time. I used to miss quite a few plantings when I was away working and it was rare that I could make up for it so I've decided to run activities through the year so that there will be always something going on in the years to come. I also have an active mailing list to keep members up to date on what is happening.



Jim, Chris, Fred and Ray Helping out on the second planting

Landcare Courses

The direction I would like to lead the group is to become proficient in doing things themselves. In the past there have been handouts of seedlings to landowners and it has been a real pain for the coordinator to sort, store, maintain and distribute them out. Now I offer the chance for members through courses to learn how to collect native seed and grow their own seedlings to end up with better selection of plants suited to their block. Teaching members to be self sufficient is a far better direction to take I believe.

The courses running this year are;

Propagation of native seed and cuttings;

Native seed collection and treatment;

Safe Use of Chemicals in the Workplace.

Funding for these courses came from International Power Mitsui and the grant was applied for by the WLCG. The courses were warmly embraced by members and are fully booked. For those that missed out don't despair, I am looking at running more courses next year. You can leave your expressions of interest at our new web site (refer to next paragraph).

Wandi Landcare Website

The Wandi Landcare Group now has a presence on the web and also has a monthly newsletter , the August issue which has already been distributed can be downloaded from the web site. Please be patient as it takes a while to get a web presence and so you will find some of the sections void for now. This will change in the months ahead. The address is:

www.wandismallharvest.com/wlwg.

Quad / Trail Bike Vandalism

A senseless act of vandalism has occurred at the site of this year's first planting. A quad drove through an area that had been planted, knocking over several stakes. Luckily not much damage was caused by this stupid act. I also came across quad tracks accessing the lake through the Robinson Road bridal path. I managed to get the number of the "on duty" Ranger so if you see motorbikes or quads out on the lake area where it is illegal for them to be, please call **0411 078 264**. They can be contacted 7:00am - 6:00pm Monday to Friday and 8:00am - 5:00pm on weekends.

Native Trees Decline Project

Green Skills is running a Native Tree Decline program aimed at landholders of the Town of Kwinana and Shire of Serpentine. 30 landholders of each municipality will be asked to participate in a trials program which offers special treatment kits for up to 8 trees. There will also be \$200 per successful applicant to use towards native seedlings, weed control etc. Tracy Bell can fill you in on all the fine details. Expressions of interest are now being requested so send me your name, contact details etc to me (contact details this page bottom left) or snail mail to 22 Robinson Road Wandi 6167 and when she gets back from holidays in September, I'll forward them on to her.

Membership of the Wandi Landcare Group

On a finishing note, anyone that would like to become a member of the WLCG can do so by either visiting the web site and downloading a copy of the application form, emailing me for one at pearling@oceanbroadband.net or you can call me on **93972232** or **0428 604032** to arrange one. The WLCG meeting in association with the Wandi Progress Association meets on the 3rd Wednesday of every month so feel free to come.

Fred Erdtsieck, Wandi Landcare Group coordinator

Do you have any useful community news such as crime in the area etc? Contact the Editor on 93970249 or email jimrussell@iceweb.com.au

Our Furry Friends – the Quenda or Southern Brown Bandicoot

We are fortunate in Wandi that we have a good population of Bandicoots, following are some facts mainly compliments of the City of Melville Piney Lakes Environmental Education Centre website. For the full facts sheet go to their website

<http://www.melvillecity.com.au/environment/piney-lakes/quenda-quest/all-about-the-quenda>



The Quenda is the Western Australian subspecies of the Southern Brown Bandicoot (*Isoodon obesulus*). It is a small marsupial similar in size to a small rabbit.

Quenda have short, yellowish-brown to dark grey fur on their face and back, and the underparts are creamy white in colour. The ears are short and rounded and animals have a short stiff tail. Males of the species are larger than females.

They are omnivorous, foraging predominantly for adult and larval insects, and also eating berries, fungi, seeds and some plant material. They make characteristic small conical shaped holes amongst leaf litter and soil when foraging.

Native wildlife such as Quenda also play an ecological role in remnant vegetation. They dig in search of food, thereby enabling rainfall to penetrate water repellent soils, as demonstrated for another digging species, the woylie (*Bettongia penicillata*) (Garkaklis et al. 1998). Turnover of leaf litter also assists the decomposition process, playing a part in reducing the risk of fire. Thus, the loss of this species can lead to further degradation of habitat.

Sexual maturity is reached at about six months of age, and at a weight of about 600g. Reproduction typically occurs between June and September, gestation period is 12-15 days, and 1-6 pouch young are produced (though litters of 2-4 are most common). Young are weaned at approximately 60 days, and two litters may be produced each year. Quenda tend to be solitary animals, though males often fight in the breeding season to defend females.

Quenda are generally reported to be nocturnal. However some are commonly observed during daylight hours, including activity in the middle of the day. During the day Quenda would normally reside in oval-shaped nests constructed from vegetation, leaf litter and soil.

Home ranges vary with population density, and range from 5-9 ha for males and 1-6 ha for females.

Quenda are occasionally known to eat pet food (however, this is not a natural diet for these animals and deliberate feeding is not recommended - you can encourage Quenda by providing a natural, well vegetated area that will provide shelter and ample natural food, precluding the need for supplementary feeding).

There are reports that feeding them too much bread can cause cataracts.

Wandi Envirowatch - Another Wandi Invader – Caltrop

What does caltrop look like?

Caltrop has fine fern-like leaves and grows flat against the ground. The leaves are usually a dull greyish-green colour. The tiny flowers are yellow with 5 petals. The woody prickles are similar to doublegee, however caltrop only grows in summer and doublegee grows in winter and spring. Doublegee has a broad leaf similar to English spinach.



Photo courtesy Agriculture WA

What damage can caltrop cause?

Heavy infestations after summer rain can produce an abundance of sharp spiny burrs, which make it very uncomfortable for people and animals alike. It is also a nuisance around farm buildings, townsites, railway yards and recreation areas because of the burrs.

When am I likely to see this pest?

Summer.

What if I find caltrop?

Small numbers of plants can be eliminated by hand grubbing, or if there are only a few plants on a firm surface, the quickest method of removal is to cut through the central tap root. The plants and seeds may be placed in a bag and disposed of in a bin or they can be dried and then burnt, if permitted by local council bylaws. Carefully pick up any of the spiny seeds that fall from the plant.

More Information? The Dept of Agriculture have a useful fact sheet available on the web - See http://www.agric.wa.gov.au/pls/portal30/docs/FOLDER/IKMP/PW/WEED/WC/FN042_2003.PDF

The Dreaded Sydney Weed Wattle – After our article in the last Warbler it is pleasing to see the people who are removing this dreaded pest. At home we have “Gone to War” against it and seen close at hand how many grass trees and other natives that it has killed. We can only remove it as a community effort so if you see it please “cut it or pull it”. Ed

At the Hall and Resource Centre

Smithy's Boxing Gym - Boxing Training

Mon – Thurs 5:30 to 7:15pm



\$5 per night

Phone Elaine on 94391078
or Mob 0412404674

Email: elliejo@westnet.com.au

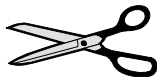
WANDI HALL HIRE

Phone Debbie Cocks on 9410 2009

for further
information or
bookings



WANDI CRAFT GROUP



1st & 3rd Thursday
of the month

A friendly group that meet for a chat and participate in a variety of crafts. Contact Debbie on 9410 2009

OLD TIME FAMILY DANCE



2ND Saturday
of each month

8.00pm start

Live Band - Supper supplied - No alcohol
Contact Pat – 9439 2727

WOODTURNING CLUB



First & third Thursday of
the month at 7.00pm

Wednesday at 8.00am - 12.00
weekly

New members always welcome.
For further information phone Alan 9528 2520

TENNIS COURT HIRE

Have a fun day with the family or friends by hiring our tennis courts Or become a member with an annual fee. Healthy family fun!!



Cost is \$5.00 per hour
per court with a \$20 key
bond.

For more information or bookings phone Debbie Cocks
–9410 2009

WANDI PLAYGROUPO



Tuesdays at 10.00am.

A delightful group of mums and children meet every
Tuesday

Contact - Jenny (President) - 94379484
Johanna (Secretary) - 93970455
Melissa (Treasurer) - 93972841
for further information

WANDI BOOKCLUB



2nd
Wednesday of
the month

Wandi Hall Club rooms 7.30 pm
Contact: Marie Tully 9410 0245.

SAVE EQUUS



Meet the
Magenup
Equestrian
Centre

1st Monday of each month, at 7.30pm. All
horse lovers are welcome

WA SCROLLERS

Members of the Australian ScrollSaw Network
Inc.

Meet every Tuesday morning 9.00am –
12.00

Where: Clubrooms, Wandi Hall
Beginners welcome

Contact: Kevin Treasure – 9529 3227

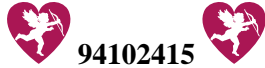


WEST AUSTRALIAN GUILD OF WOODCARVERS INC.

WANDI - This branch of the Guild meets every Monday morning between
9.00am & 12.00. - Beginners or advanced welcome. Contact- Fred Brewer
9419 3558

LOCAL ADVERTISEMENTS

Jane Silich
CIVIL MARRIAGE CELEBRANT



94102415

Mob 0401425404

info@janesweddings.com.au

www.janesweddings.com.au

PICK of THE CROP
WINERY TOURS

"You drink, we drive"

Jane Silich

Phone: 9410 2415

Mob: 0401 425 404

Email:

winerytours@hotmail.com



Wandi Hair Studio

Hair, Nails and Makeup



Phone Karen

9410 2666 or 0417 928 699

by appointment only

116 The Horseshoe, Wandi

25 years of hairdressing experience



Local Rep. Barry Wyllie

Sales – Service – Parts

Re – conditioned units

Phone – 9410 1848

Peter Woodward's Lawncare
Services



**Commercial &
Industrial
Specialist**

Fax: 9437 2999

Mobile: 0414 729 346

Wandi Small Harvest

Unprocessed Bush Flower Honey

Bee Removal Services

Bush Maintenance Service

Selective Weed Spraying

Fred Erdsieck Mobile: 0428604032

Tel: 93972232

Email: fred@wandismallharvest.com

Riding Lessons
Wandering Grove Equestrian
Park

Level 1 NCAS Instructor

Olympic Sized Dressage Arena

Fully Grassed Jumping Arena

All Levels above beginners catered for

Children and Adult Lessons

Private Lessons \$60 per hour

Group Lessons (2-4 students) \$40 per hour

Phone- Susan Poole 0409378895 or 93971082

260 Dehaer Road, Wandi

Like to advertise here?

Contact the Editor on 93970249 or email

jimrussell@iceweb.com.au